

**RUDECO**  
**Vocational Training in**  
**Rural Development and Ecology**

**Module № 2**

# **Sustainable Rural Development: Approaches for Regional and Local Programmes Elaboration**



**Responsible University**

**Russian State Agrarian University - Moscow**  
**Timiryazev Agricultural Academy**



**Tempus**

159357-TEMPUS-1-2009-1-DE-TEMPUS-JPHES

This project has been funded with support from the European Commission. This publication reflects the views only of the authors, and the Commission cannot be held responsible for any use which may be made of the information contained therein.

УДК 631.1  
ББК 4  
С40

ISBN 978-5-906069-64-1

Sustainable Rural Development: Approaches for Regional and Local Programmes Elaboration / A.V. Merzlov [and others]. Series of training manuals "RUDECO Vocational Training in Rural Development and Ecology". M., 2012. – 72 p.

RUDECO  
Vocational Training in  
Rural Development and Ecology

National Project Coordinator  
Sustainable Rural Development Center  
Russian State Agrarian University -  
Moscow Timiryazev Agricultural Academy, Russia

Grant holder and Project Management  
Eastern Europe Centre  
University of Hohenheim, Germany

#### **Authors**

Alexander V. MERZLOV (RSAU - MTAA)  
Maxim R. SADYKOV (RSAU - MTAA)  
Liubov A. OVCHINTSEVA ( VIAPI of A.A. Nikonov)  
Olga A. POPOVA (Ministry of Agriculture of the Russian Federation)  
Vladimir A. RUKIN (Tambovstat, Russia)  
Helene WEHRLIN-CROZET (ASP, France)  
Thomas RUGER (ASP, France)

#### **Responsible University**

Russian State Agrarian University - Moscow Timiryazev Agricultural Academy (RSAU - MTAA), Russia

#### **Working Group Partners**

Agency de Services et de Paiements (ASP, France)  
Russian State Agrarian University - MTAA named after K.A.Timiryazev  
All-Russian Institute of Agrarian Problems and Informatics AA Nikonov (VIAPI)  
Administration of the Tambov Region

#### **Reviewer**

Vitaliy V. LAZOVSKIY, Doctor of Agricultural Sciences, Corresponding Member of RAAS, RSAU-MTAA  
Ruhman H. ADUKOV, Doctor of Economics, Professor, head of VNILOPTUSKH department

#### **Contact**

This text book or parts of it can be reproduced in any form for educational purposes with prior permission. For more information contact: Dr. Alexander V. Merzlov, Timiryazev University, Sustainable Rural Development Center., Email a.merzlov@gmail.com, <http://tempus-rudeco.ru/>

November 2012

## Preface

The present guide is one of the series of the guides that were developed within the framework of the project TEMPUS 159357-TEMPUS-1-2009-1-DE-TEMPUS-JPHES “Vocational Training in Rural Development and Ecology” (RUDECO) under TEMPUS programme.

The project RUDECO aims to improve the vocational training system in the sphere of rural development and ecology and involves various agricultural universities in Russia and Europe. The project goal is to facilitate the universities in acquiring the necessary qualifications by means of conceptualization and development of study guides (modules), as well as by training the instructors who will participate in the vocational training of governmental employees.

### **The project goals are:**

- Development of the vocational training system in the sphere of ecology and rural areas at 11 agrarian universities of Russia, enabling them to obtain a higher qualification;
- Development of 12 modules for representatives of governmental agencies on the national, regional and local level;
- Training of the representatives of Russian public institutions and representatives of public administration of various levels in the sphere of ecology and rural development using professional training from certified instructors;
- Implementing «training for trainers» using the support of European partners;
- Development of international cooperation of Russian institutions of higher education.

### **The series of modules covers the following topics:**

- **Sustainable development: key terms and theoretical basis** (Introductory Module1, Russian State Agrarian University – Moscow Timiryazev Agricultural Academy)
- **Sustainable rural development: approaches for regional and local programmes elaboration** (Module 2, Russian State Agrarian University – Moscow Timiryazev Agricultural Academy)
- **Ecolabeling and marketing of environmental and regional products from rural areas** (Module 3, Orel State Agrarian University)
- **Eco-tourism and tourism in rural areas** (Module 4, Buryat State Agrarian Academy of Agriculture named after V.R.Philippov)
- **Conversion of conventional farming into organic farming** (Module 5, Yaroslavl State Agricultural Academy)
- **Environmental regulations and laws** (Module 6, Stavropol State Agricultural University)
- **Ecological related problems of intensive agriculture (plant and animal production)** (Module 7, Omsk State Agrarian University)

- **Participatory approach in rural development** (Module 8, Kostroma State Agricultural Academy)
- **Reducing pollution in rural areas caused by agricultural, industrial and municipal solid waste** (Module 9, Novosibirsk State Agrarian University)
- **Sustainable use of water resources in rural areas** (Module 10, Samara State Agricultural Academy)
- **Food safety and product quality control** (Module 11, Moscow State Agroengineering University named after Goryachkin V.P.)
- **Management of biological resources of rural areas** (Module 12, Tambov State University named after G.R. Derzhavin)

The introducing module on the key terms and theoretical basis of sustainable development basis is an ideal preparation for all the above listed specific modules. Persons who start to get involved in the field of ecology and sustainable rural development, we recommend to read this basic module first, before deepening one of the other topics. Readers interested in the modules and further training can address also all involved university partners to get further information or training about the listed modules.

This module was elaborated to help developers of sustainable rural development programs in regions of the Russian Federation.

It contains approximate structure and content of the programs, advice on identifying specific regions and the reflection of the specific programs of rural development, outline the tools and techniques of rural development. Presents in detail the experience of grants for rural development in Russia and abroad.

The module is designed for regional administrations, local authorities, ICC, the business community and the public, consulting organizations and others who are interested in learning and implementation of modern approaches to the sustainable development of rural areas.

# Table of contents

Preface .....	3
Table of contents .....	5
List of figures .....	7
List of tables .....	7
Introduction .....	8
<b>1 Economic restructuring and rural development.....</b>	<b>9</b>
<b>2 Measures for sustainable development of rural areas in the state program of agricultural development and regulation of agricultural products, raw materials and food for the years 2013-2020 .....</b>	<b>13</b>
2.1 Improvement of living conditions of the citizens living in rural areas, including young families and young professionals .....	15
2.2 Development of social and engineering infrastructure in rural areas.....	17
2.3 Integrated compact development of rural settlements.....	18
2.4 Grant support of local initiatives in rural communities. ....	19
2.5 Promotion and popularization of achievements in the field of rural development.....	20
<b>3 Recommendations for elaborating of regional programmes for the sustainable development of rural areas .....</b>	<b>22</b>
3.1 Regulatory and legal framework.....	23
3.2 Stages of program development .....	23
3.2.1 Organizational stage.....	24
3.2.2 Analytical stage of program development.....	25
3.3 The role of the public and district programs of SRD in developing regional SRD programs. ....	34
3.4 Goal-setting, the formation of tasks and activities of the program blocks.....	35
3.5 Discussion and adoption of the program .....	37
3.6 The main problems of elaboration of the sustainable development of rural areas .....	38
<b>4 Grant support measures for rural development .....</b>	<b>40</b>
4.1 Altay (grants of the Governor) .....	41
4.2 Arkhangelsk Region (grants for rural territorial self-government (TSG)) .....	42
4.3 Perm region (grants fund to support social initiatives).....	42
<b>5 Foreign and domestic experience in the development of rural development programs .....</b>	<b>44</b>
5.1 EU experience .....	44
5.2 Rural development programs in regions of Russian Federation.....	45
5.2.1 Altay region.....	45
5.2.2 Belgorod region .....	47
5.2.3 Vologda Region.....	50
5.2.4 Leningrad Region .....	50
5.2.5 Sverdlovsk region .....	51
5.2.6 Tambov region.....	53
5.2.7 Ulyanovsk region.....	55

<b>Conclusion.....</b>	<b>56</b>
<b>Annex I .....</b>	<b>57</b>
<b>Appendix 1: Passport of regional target program.....</b>	<b>57</b>
<b>Appendix 2: Survey (list of issues).....</b>	<b>58</b>
<b>Appendix 3: methodological program.....</b>	<b>60</b>
<b>Appendix 4: Structure.....</b>	<b>61</b>
<b>Appendix 5: Maps.....</b>	<b>63</b>
<b>Annex II: Training material .....</b>	<b>68</b>
<b>RUDECO partners and contact information.....</b>	<b>69</b>

**List of figures**

Fig. 1 The structure of informal employment in rural areas, 2011 ..... 10

Fig. 2 The ratio of per capita disposable resources of rural and urban households ..... 11

Fig. 3 The scheme of interaction between members of the development SRD programs at the municipal area is as follows ..... 35

Fig. 4 Formation of tasks and activities of the program blocks So the first problem has a block of program activities:..... 36

**List of tables**

Table 1 Changes in the structure of employment in rural areas..... 9

Table 2 Structure of agricultural production by farm ..... 10

Table 3 Levels of sustainable development planning in rural areas..... 22

Table 4 Standards for the formation of social cluster ..... 49

## Introduction

Development of regional and district programs for sustainable rural development is the main instrument of the federal rural development policy in the field.

### **Goals and objectives:**

The purpose of the module is to provide knowledge on the development of policy instruments in the field of sustainable rural development at the regional and district levels.

### **The module objectives include:**

- Get acquainted with best international experience in the development of rural areas.
- Investigate the condition of rural areas in your region, to identify and structure their current problems.
- Learn how to use the basic mechanisms for sustainable rural development.
- Know the methods for managing sustainable development of rural areas in Russia (at the regional and municipal levels).
- Have an understanding of the approaches to the development of alternative employment in rural areas.

### **Trainee requirements:**

Higher education in the humanities. Knowledge of the vocabulary and the theoretical basics for sustainable development of rural areas (group 1), basics of the state and municipal government. Desirable experience in government or local government.

### **During their work on the module, the trainees will learn:**

Approaches to the formation of the sustainable development of rural areas used in the EU and Russia. Experience of Russian regions in the planning of sustainable rural development.

### **After the module is completed, the trainees will:**

- understand policies and mechanisms for sustainable development in rural areas of Russia.
- take an active part in the development of the sustainable development of rural areas in your region.
- use elements of international experience in the development of policy instruments for sustainable rural development.
- learn the best practices to manage the transition to sustainable rural development.
- offer perspective directions of diversification of the rural economy in your region (district)The terms and the actual situation

### **This module was prepared by:**

PhD Merzlov A. (Center for Sustainable Development of Rural Areas RSAU-MTAA, Russia), Ph.D. Ovchintseva L. (VIAPI A.A.Nikonov), Ph.D. Popov O. (Ministry of Agriculture of the Russian Federation), Sadykov M. (RSAU-MTAA, Russia), Rukin V. (Tambov, Russia), Wehrlin-Crozet (Agency Service and Payments, France), Thomas Ruger (Agency Service and Payments, France)

# 1 Economic restructuring and rural development

As a result of the socio-economic transformation of our country the organizational structure of production in the agricultural sector, the structure of land use, the territorial structure of the location of production in rural areas have significantly changed.

Agriculture has traditionally been considered one of the main sectors of the Russian economy. However, for years of reforms its role significantly decreased: in 1990, its share of GDP was about 11%, in 2002 - more than 5%, and in 2010 - only slightly more than 3%. However, in the village continue to live more than 37 million people, or 26% of the Russian population.

Over the past ten years in the employment structure of the rural population share of employment in the traditional sectors of the rural economy shrank by one-third, respectively redistributed employment in services, including financial, trade, construction, transport and communications. (Table 1)

*Table 1 Changes in the structure of employment in rural areas*

Industry	2000	2011
agriculture, forestry, hunting, fishing and fish farming	40,4	25,4
industry, including mining, processing, production and distribution of energy resources	13,5	13,2
trade, services, hotels and catering	7,4	13,6
construction	3,3	6,5
Transport and communication	5,5	7,2
Finance and real estate services	0,7	4,2
state and municipal administration, compulsory social security	6,9	8,1
education	11,3	11,2
health and social services, including culture	7,9	7,2
more	3,2	3,3

*Source: Survey on employment for the relevant years*

Also, in rural areas characterized by employment in the informal sector, which is about two times higher than the average in the economy. In the structure of informal employment dominates employment in agriculture, but in recent years has also planned to shift in the direction of increasing the share of employed in non-agricultural activities. (Figure 1)

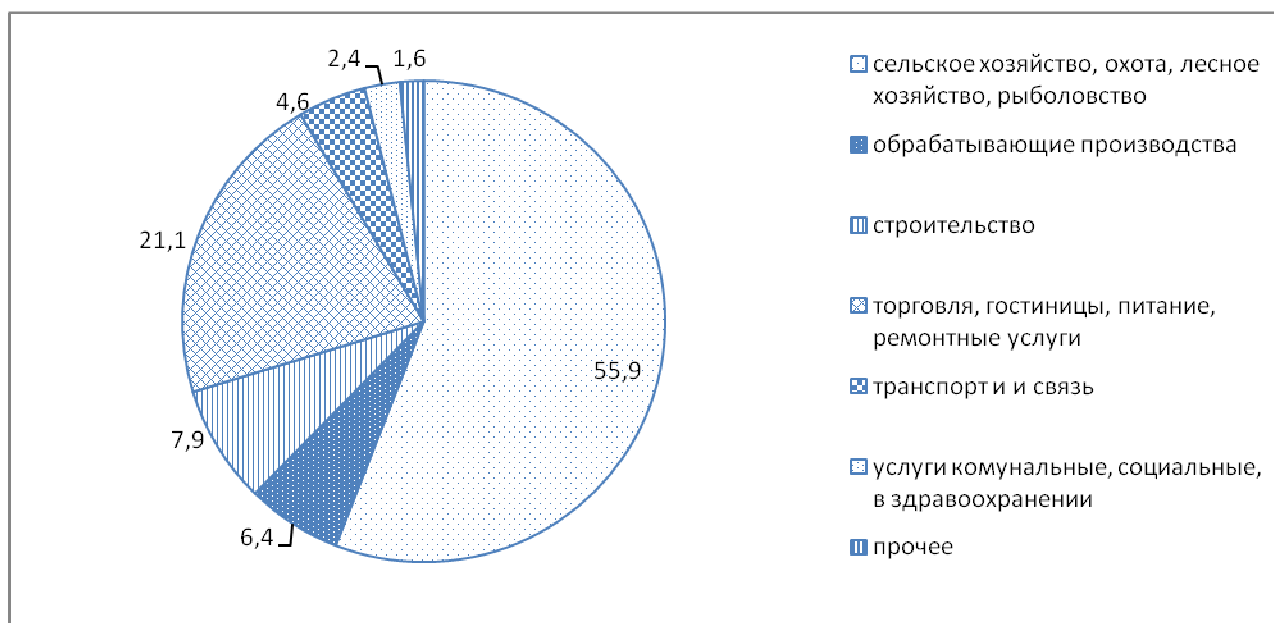


Fig. 1 The structure of informal employment in rural areas, 2011

Restructuring of the agricultural organizations, land reform radically changed the agrarian structure of Russia. Various agrarian formations were formed in different regions of Russia: in some regions the bulk of gross agricultural produce large farms, others – family farms. During the transformation was formed the farming sector, whose share is now close to ten percent in the production of agricultural products. (Table 2)

Table 2 Structure of agricultural production by farm

Categories	1990	1995	2000	2005	2010	2011
Total	100	100	100	100	100	100
agricultural enterprises	73,7	50,2	43,0	41,4	44,5	47,7
farmer economy	0	1,9	3,0	6,0	7,1	8,9
Private farms of population	26,3	47,9	54,0	52,6	48,4	43,4

In the socio-economic transformation of our country has changed the organizational structure of production in the agricultural sector, the structure of land use, territorial structure of production location. Industry structural changes in our country occur in the context of the global impact of factors such as technological changes in the industry, the growing importance of environmental conservation, the formation of an open economy and Russia's accession to the WTO, the strengthening of Russia's integration into the regional and world trade in agricultural products, changes in customer requirements to quality of agricultural products. These structural changes in general have a negative impact on the living standards of the rural population, increased differentiation of the population by income, continues to persist a gap between rural households from urban in per capita disposable resources.

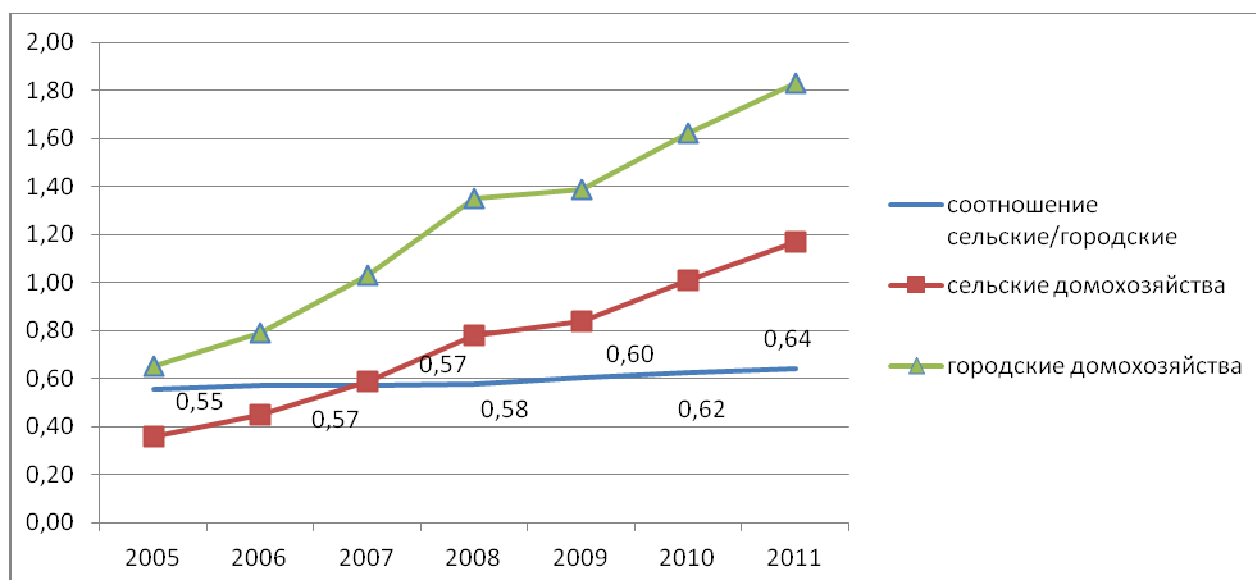


Fig. 2 The ratio of per capita disposable resources of rural and urban households

In absolute terms, the per capita disposable resources are growing in both urban and rural households. According to data for 2011, they amounted to rural households 11.7 thousand rubles, urban - 18.3 thousand roubles, that is, urban farms a third higher than in rural areas. (Fig. 2) The fact that the share of rural population 26%, the proportion of rural poor is about 40% of the total number of poor in the country.

Rural poverty is associated primarily with low income. The employment rate of the rural population at the beginning of 2012 was 58.1%, an increase of 7 percentage points lower than in the city. The gap in employment remains for the last 10 years. Wages in agriculture, though growing, but it still remains one of the lowest. Monthly wages of agricultural workers in 2011 was 12.1 thousand, or slightly more than half (54%) of the average salary on economy. About a quarter of agricultural workers in 2011 received wages below the subsistence minimum. While agriculture - one of the few areas where there are still arrears of wages. On 01.06.2012, the arrears of wages in agriculture, hunting, fishing and fish farming due to lack of own funds amounted to 203 million rubles. At year-end salary arrears within the industry generally declining, but still remains one of the highest in the inter-industry comparison. Formal labor market in rural areas is much narrower than in the city. Rural unemployment levels consistently higher than in the city is about twice that in the first quarter of 2012 was approximately 10%. Search for formal employment in the rural areas are hampered by remoteness of many rural communities from the labor market and the employment service.

Social protection of the unemployed in rural areas is much lower than in the city, as well as awareness of the events, the promotion of employment of the population is poor. To compensate for low or no income from wages villagers resorted to diversify their income to various break-in, such as the migration to work in the big cities, fishing, hunting, gathering and selling mushrooms and berries, production for their own farms, etc.

Most of rural households produce food, but this production is a consumer nature. Private households are an important form of secondary employment, additional earnings to supplement the meager budget of the family, but from the poverty of the rural population is not saved. Considering the changes in the structure of employment contracts and the share of natural receipts in the budget for rural households, which is the latest available data for 2010 was just over 9%.

To improve the employment situation and income of the rural population was adopted a number of measures:

- easier access of villagers to credit through interest rate subsidies on loans for non-agricultural self-employment: the development of trade, agriculture, tourism, handicrafts, domestic, social and cultural services to the population,

- rural unemployed have opportunity to apply to the employment service for an annual subsidy of unemployment in order to start their own business.

And this measures are still insufficient. There should be a universal development of mechanisms for rural development to facilitate adaptation of the rural population to the transformation process.

## **2 Measures for sustainable development of rural areas in the state program of agricultural development and regulation of agricultural products, raw materials and food for the years 2013-2020**

The implementation of the sustainable development of rural areas in the state program is planned under the current federal program "Social development of the village up to 2013" and the new program "Sustainable rural development for 2014-2017 and for the period up to 2020", a project concept which is currently developed by the Ministry of Agriculture of Russia.

It should be emphasized that, in the broad sense of the sustainable development of rural areas and rural areas contribute almost all of the state program: interest rate subsidies, including on loans taken to develop alternative agricultural activities in rural areas, expansion of extension services in rural areas, support for small enterprises, and the preservation of traditional forms of agriculture in the North. For the purpose of the state program are also greening agriculture, without a doubt one of perspective directions of rural development in the country.

All of these listed areas can have their development in regional target programs. For example, in the Altai region are more than three dozen programs in one way or another, affects the development of rural areas.

But because the measures of budget targeted programs should not be duplicated, in program of sustainable development of rural areas are included only those measures that support rural development, which meet the needs of the region to the federal policy of rural development and make up incomplete activities and programs of the other departments.

Support from the federal budget for the Ministry of Agriculture of the Russian Federation under the federal program "Sustainable development of rural areas in 2014-2017 and for the period up to 2020" will be released with the appropriate regional program adopted by the regional agency responsible for the development of agriculture and rural areas.

Activities of the project concept of the federal target program "Sustainable Development of Rural Areas for 2014-2020 years" are aimed at achieving the following objectives:

create comfortable living conditions in rural areas;

Increased participation of rural communities in addressing local issues;

formation of positive attitude towards the village and rural life;

The main objectives of the program are:

the needs of the rural population, including young families and young professionals in comfortable accommodation;

improving social engineering arrangement of the village;

rural communities to support initiatives aimed at improving the conditions of life;

promotion and popularization of achievements in the field of rural development.

Measuring the achievement of federal programs over the years of its implementation is carried out by determining the extent and completeness of reaching these objectives, as well as at the following target indicators and indicators:

- Input (purchase) of housing for people living in rural areas, including young families and young professionals;
- The proportion of households to improve living conditions in the framework of the Programme, the total number of families who are registered as in need of accommodation in rural areas;
- The proportion of young families and young professionals, to improve the living conditions of the Programme, the total number of young families and young professionals who are registered as in need of accommodation in rural areas;
- Commissioning of educational institutions;
- The proportion of students in secondary schools, are in disrepair, the total number of students;
- Opening of medical stations and / or offices of general practitioners;
- Provision of rural obstetric units and / or offices of general practitioners;
- Commissioning plane sports facilities;
- Availability of the rural population plane sports facilities;
- Commissioning of facilities culture and leisure;
- Availability of rural institutions, culture and leisure;
- Commissioning of gas distribution networks;
- Penetration in homes (apartments) network gas;
- Commissioning of the local water supply;
- The level of the rural population with potable water;
- The number of rural communities in which projects are implemented integrated compact construction;
- The number of local initiatives in rural communities that have received grant support.

## **2.1 Improvement of living conditions of the citizens living in rural areas, including young families and young professionals**

Activities to improve the living conditions of the rural population and housing for young families, young professionals in rural areas are carried out in order to meet the needs of rural citizens in comfortable housing that meets the characteristics of the rural way of life, to attract and retain young professionals in rural areas and improve the demographic situation in the rural areas. For in 2003-2011 within the framework of the federal program "Social development of the village," rural families, including family of young professionals have built or purchased by the state of 15.6 million square meters. meters of housing, including young families and young professionals - 4.4 million square meters. m from 233,000 rural people have improved their living conditions, including 75,000 young families and young professionals. In 2012-13, it is planned to buy (build) is about 1.7 million square meters. meters of housing, and so by the end of the SFP, "Social development of village" of about 260 thousand rural families improve their living conditions.

To meet the challenges of improving access to housing for residents of the village in the regional target programs can be provided:

promote investment activity of organizations, particularly agricultural producers, in the housing sector;

improving the land and mortgage construction and purchase of housing in rural areas;

providing preferences to provide comfortable housing for young families and young professionals with the activation of reproductive behaviour;

improving rural residential design, development and modernization of housing and construction industry, reducing the cost of rural housing, the widespread use of autonomous systems of engineering equipment in rural homes.

There can be following mechanisms for increasing the availability of housing and improving housing conditions:

providing social benefits for construction and purchase of housing in rural areas, including the use of mortgage loans

simplify procedures for granting land plots for individual housing construction

creation of cooperatives for the construction of housing in rural areas, etc.

From the federal budget, the consolidated budget of the Russian Federation citizens living in rural areas, young families and young professionals receive social benefits of up to 70% of the estimated cost of construction (purchase) of housing. Funding for the remainder of the construction costs (purchase) of housing at the expense provides from own (borrowed) funds of citizens, young families and young professionals.

In case of absence of own (borrowed) funds, a municipality or municipal entity with the employing organization provides co-financing the construction (purchase) of housing, which provides young family (young professionals) a contract of employment with the right to repurchase.

The provision of social benefits provided to citizens, young families and young professionals who fulfill the following requirements:

permanent residence in the countryside or the expression of the desire to reside permanently in the rural areas (for young families and young professionals);

having our own (borrowed) funds in an amount sufficient to complete construction (purchase) of housing with the allocated social benefit or use of assets under construction at their property and free from encumbrances.

Recognition in need of better housing or are homeless in rural areas, in which a young professional or a young family member is working or willing to work.

For young families and young professionals an additional condition is the work or the expression of a desire to work on a labor contract for at least 5 years in the organization of agriculture and rural social sphere.

Regional administrations should pay more attention to the system improvement process related to the provision of land, works with manufacturers to build service housing, assistance in setting up of young professionals in rural areas.

Note that in the rural areas there are also programs that help obtaining housing for young doctors willing to work in rural areas (the project "Housing for junior doctors"), a special program of mortgage lending is also available for young teachers (program "Teacher's House"). These programs are implemented by the federal and regional budgets.

For activities in this area, it is important to analyze the following indicators:

- Total area of housing in rural settlements;
- Total area of housing, recognized in accordance with established procedure emergency (Old);
- the total floor area of housing, falling by an average of one resident;
- The degree of improvement of the housing stock;
- the number of people recognized in the prescribed manner to be in need of better housing conditions (at this stage it is advisable to create the list needing sectional municipalities in the region, as well as planned for the construction of large-scale investment projects in the region that would need to attract new labor).

## **2.2 Development of social and engineering infrastructure in rural areas**

These activities are carried out in 2003 to improve the territorial availability of social infrastructure and the level of engineering resettlement villages.

During the period of 2003-2011 years in operation 54.4 thousand km of distribution gas networks in 2012-2013, planned to be introduced on 5 thousand km of lines. It is expected that the implementation of measures penetration in housing network gas in rural areas will increase to 53.8 percent.

As part of the development of water supply in operation 14.2 thousand km of local pipelines, scheduled for 2011-2013, the commissioning of 3.5 thousand km of lines. It is expected that the implementation of measures the level of provision of rural drinking water supply will reach 56.2 per cent.

In addition, as part of activities to enhance engineering arrangement tanks entered the village telephone network to 705.5 thousand rooms, built and rehabilitated 11.5 thousand km of power transmission lines 0.38 and 6.10 kV transformer 2200 substations.

As part of the development of the social infrastructure of the village is built educational institutions for 96 thousand seats, cultural and leisure facilities such as a 24.3 thousand seats, opened 461 units FAPs.

In 2012-2013, the Programme is expected to enter the educational institutions by 6.6 thousand people, open 316 units of medical stations. In addition, as part of the development of primary health care was put into effect the district and district hospitals by 6.1 thousand people, out-patient clinics - 7.5 thousand visits per shift.

The federal budget for the development of social and engineering infrastructure in rural areas will be provided in the form of subsidies to the budgets of the Russian Federation to co-finance their spending commitments to regional and (or) municipal target programs, including measures to ensure the construction and (or) the reconstruction of social and engineering infrastructure in rural areas.

Based on the standards of the population, the current state of social infrastructure in the context of municipal region is determined each year made folding construction plan (the best option - in the context of all municipalities).

In the draft of regional program is appropriate to create a "road map" of works on construction of social objects in the context of each municipality. "Road Map" includes all activities directly preceding the construction phase - the development of construction documents, passing the state examination, preparation of the application for inclusion in targeted investment program in the region (for the co-financing), public procurement for works and services. Experience shows that disregard all these steps leads to delays in construction, an increase in the cost of work or untapped financial resources.

## 2.3 Integrated compact development of rural settlements

To implement measures to support the integrated compact construction of rural settlements is a modern social and engineering infrastructure for compact housing near objects agricultural production.

Support for integrated compact construction of rural settlements will be implemented within selected regions of the Russian Federation on the basis of competitive projects with integrated development of land for mass housing and the creation of favourable conditions for the life of the citizens, to stay involved in the complex building.

A requirement for projects is the best interests of the permanent population living in rural areas, in which the complex building. Comprehensive development of rural areas should take into account the area's traditional architecture and placement of buildings to fit into the local landscape.

First of all, it is supposed to support projects that will be implemented in areas of rapid growth in agricultural production, is in need of additional labor, including young professionals with the latest knowledge in the field of new technologies of agriculture.

The federal budget for these purposes will be granted on the terms and conditions determined by the Government, as well as regulations of the Ministry of Agriculture of the Russian Federation.

Plots of land for housing development, equipped with engineering infrastructure are provided to give priority to citizens - the recipients of social benefits for the construction of housing under federal programs.

There are following project selection criteria integrated compact construction of rural settlements in the subjects of the Russian Federation:

*Complexity* - providing housing development site engineering infrastructure and social and cultural spheres;

*Density* - the restriction of the pilot project area boundaries of villages and provision of transport (walking) the availability of social and cultural spheres;

*Relation of the project to the development of agriculture* - compliance solved in the implementation of the pilot project the task of creating the necessary conditions of life for the staff of agriculture development priorities of agriculture;

*economy* – minimize the costs of the action by reconstructing existing in a rural community of engineering and social infrastructure, the use of modern resource-and energy-efficient building technologies, the use of local building materials and construction industry products;

*quality and originality of the architectural organization of building* – line facilities, the construction of which is expected to carry out the project, the local natural conditions, the demographic composition of the population, national traditions and customs, as well as the modern requirements for architectural and planning decisions;

*Social and economic benefits* – increase security of the rural population comfortable housing and social infrastructure, the creation of new jobs and attract highly qualified specialists in the organization of agriculture and social services in rural areas;

*financial security* - guaranteed availability of funds from the budget of the Russian Federation and (or) local budgets, budget sources in an amount sufficient for the project, taking into account federal subsidies;

*compliance with the legislation of the Russian Federation in the field of land management and urban planning* - the presence of the title documents for the land allotted for the project, as well as a master plan showing the boundaries of integrated development.

## **2.4 Grant support of local initiatives in rural communities.**

Grant support of local initiatives in rural communities to improve the living conditions is performed in order to:

- increase the participation of the rural population in matters of local significance;
- mobilize their own material, human and financial resources of individual citizens and their associations, rural municipalities and operating on their territories of business entity for local development;
- formation and development of the rural civil society promoting rural development and sustainability;
- consolidation of local rural communities in addressing improvement of human settlements and improve the natural environment and social environment, and participation in the development of the plan of development of villages and creating favorable social and psychological climate in the country.

Support will be provided in the form of grants (grants) allocated from the federal and regional budgets for the implementation of projects identified in a comprehensive manner. Projects can be designed by villagers and their associations, rural municipalities and by economic entities.

Federal funds will be transferred in the form of subsidies to the budgets of the Russian Federation on the implementation of grant programs. The procedure for the grant program in the subject of the Russian Federation is determined by a normative act of the subject from a concerning regional features.

The federal budget is expected to be allocated to projects in the following areas:

- improvement of rural settlements (installation of street roads and sidewalks, landscaping, lighting, construction of bridges, the device wells, boreholes, etc.);
- ecological rehabilitation of rural areas;
- preservation and restoration of the natural landscape, historical and cultural monuments, temples;

- improvement of the social environment of rural communities (population fighting alcoholism, drug abuse and violations, promotion of healthy lifestyles);
- development of physical culture and sports in rural areas;
- labor, moral and patriotic education of rural youth, support for young families;
- holding contests of folk art and art activities, organization of activities and leisure center and children's art.

In the regional state list of the areas of grant support can be expanded to meet the needs and priorities of the local rural population. Obligatory condition of grant support for projects is equity participation in the project of rural communities. Local communities can participate in the realization of their past competitive selection of projects, not only by the financial costs, but also by the labor input, as well as using their own technical tools, equipment, buildings and structures. Welcome extra-budgetary resources, the participation of the local business community and all those interested in the sustainable development of a particular rural settlement.

General criteria for evaluating projects are:

- demand - the project should be used to address the most significant problems of the local community and in the interest of a wide range of its representatives in the interests of the most vulnerable groups;
- Local and short-term - the project should be carried out within the boundaries of the individual rural settlements within one fiscal year;
- reasonable costs - the project should not be associated with significant investment of funds not secured with funding sources;
- Social partnership - the project must involve local human, financial and material resources;
- social impact - the project should ensure better social environment in rural areas.

## **2.5 Promotion and popularization of achievements in the field of rural development**

The objectives of measures to promote a positive attitude in society towards the village and rural life are:

- reducing the outflow of population from rural areas;
- improving the attractiveness of rural migration to the citizens of the Russian Federation;
- involvement of specialists and skilled mass occupations in agriculture and other sectors of the rural economy, increasing the attractiveness of the village for investment and creation of new jobs;
- increasing respect in society for agricultural work and rural residents;

- public recognition of the need of state support for agriculture and rural development in the national interest.

To achieve these goals following measures should be implemented:

- carrying out All-Russian competitions to encourage the highest achievement in the field of rural development;
- carrying out national rural sports games and the finals on all-Russia's traditional (national) sports;
- Increase public awareness of the development of rural areas.
- To participate in the activities at the federal level, regions should held qualifying event.

### 3 Recommendations for elaborating of regional programmes for the sustainable development of rural areas

In accordance with the Action Plan to implement the concept of sustainable development in rural areas of the Russian Federation for the period up to 2020 is assumed that in the 2011-2012 state authorities of the Russian Federation will develop a regional program for the sustainable development of rural areas.

The development of regional rural development programs should be understood that the stability in rural development is achieved through the implementation of measures in the field of social, economic and environmental nature in the countryside. And in the scope of the specific departmental programs include those corresponding to the profile department.

Developing programs of SRD (or in other words planning rural development) can occur at the level of subjects of the Russian Federation (regions, territories and republics), districts, villages. Depending on the facility planning should adhere to the terms set out in Table 4.

Table 3 Levels of sustainable development planning in rural areas

Level of territory	Depth of study	Result
1	2	3
Russian Federation	Framework to transition to sustainable development of rural areas. Regulatory support, organization of material, research, training and consulting services. Interagency Coordination. General conditions of spatial planning.	The concept of sustainable development in rural areas of the country. Directions, activities and mechanisms for agricultural policy, food security and environmental protection, their organizational, financial, scientific and other software. Federal program of rural development and routines to ensure the sustainable development of rural areas
Subject of Federation	Development of goals and objectives of sustainable development in the region and ensuring inter-agency coordination at the regional level by types of rural areas (some areas), protected areas. Formation of the programs and plans of the integrated activities. Intermunicipal planning activities. Linking SRD programs strategies for regional development	Framework concept and program URST region. Targeted regional programs aimed at solving the problems of the agricultural sector, improving the quality of life in rural areas, reducing the demographic pressures, the development of alternative forms of employment in rural areas, the development of rural social infrastructure, improving access to housing, etc. as part of the Regional Programme for Sustainable Development. General conditions of rural development, the conditions of competitive allocations to municipalities.
District, municipality	Development of goals and objectives of the transition to sustainable development for rural settlements with all the potentials, the formation of the detailed program of activities. Linkage programs for sustainable rural development with spatial planning	Strategic development plans. Programs, SRD projects of municipalities and rural communities

### **3.1 Regulatory and legal framework**

For the preparation of both federal and regional programs developed an extensive legal framework. Key documents:

1. Federal Law № 159-FZ of 23.06.1995 "On State Forecasting and programs for socio-economic development in the Russian Federation"
2. Federal Law № 131-FZ of 16.09.2003 "On general principles of organization of local self-government in the Russian Federation."
3. Federal law № 264 FZ of 29.12.2006 "On the Development of Agriculture"
4. Decree of the Russian Federation of June 26, 1995 N 594 "On the Procedure for the development and implementation of federal target programs and interstate target programs, the implementation of which the Russian Federation"
5. Decree of the Russian Federation of 03.12.2002 № 858 "On approval of the federal target program" Social development of the village until 2013. "
6. Resolution of the Government of the Russian Federation "On approval of the State program of agricultural development and regulation of agricultural products, raw materials and food for the years 2013-2020"
7. Order of the Government of the Russian Federation № 2136-r dated 30.11.2010 "On approval of the concept of sustainable development in rural areas of the Russian Federation for the period up to 2020."
8. The draft concept of the federal target program "Sustainable Development of Rural Areas for 2014-2017 and for the period up to 2020"

Regional programs are designed and implemented the subjects of the Russian Federation independently and subject to such documents. Regions themselves define program goals and objectives, how they design and implementation mechanism. Approval of these programs in accordance with paragraph "d" of paragraph 2 of Article 5 of the Federal Act of October 6, 1999 № 184-FZ "On general principles of organization of legislative (representative) and executive bodies of state power of the Russian Federation"

### **3.2 Stages of program development**

Diversity of regional problems of rural development requires a broad approach to the development of sustainable rural development and registration of all necessary directions and routines that support the transition to sustainable development of rural areas a particular region.

Schematically, we can determine the next steps for developing a regional program of SRD.

1. Organization and preliminary activities;
2. Analysis and design of the program;
3. Review and approval.

### 3.2.1 Organizational stage

At first, the organizational stage, at the level of the regional executive body we define:

1. The state customer of Program
2. Collaborators of program activities (typically, the authorities responsible for construction activities and the development of small business and the development of education, health, culture, etc.).
3. If necessary, in the 94-Federal Law "On placing orders for goods, works and services for state and municipal needs" outsource for research and training programs.
4. Is determined working group, responsible persons departments of regional administration is preparing analytical and program activities in the relevant areas of the rural economy, the social sphere.
5. Composed work schedule (set deadlines for statistical information and analysis, case studies and interviews, round tables and other arrangements).
6. Recommends a training of government officials on sustainable rural development ([www.tempus-rudeco.ru](http://www.tempus-rudeco.ru)).

Experience in developing the first SRD- programs showed the importance of training, and at a stage before the development of the program. This helps to avoid a number of errors and mistakes (paragraph 3.6) and print the program development to a new stage.

7. Defined and accepted regulations and other decisions necessary for the implementation of sustainable development of rural areas in the region (for example, the creation of a regional fund rural development fund to support small business grant fund, grant programs, etc.)

The representatives of municipalities should be included in the working group to develop a regional program for the sustainable development of rural areas, as well as representatives of business and economic entities operating in the territory.

Program for sustainable development of rural areas is addressed to local communities, creates guidelines for all stakeholders, offers the prospect of representatives of business, government, residents and potential investors. In essence, it is a strategic partnership of the search of strategic guidance and ensure coordinated action to achieve them. This fundamental difference between the current organization of the process of planning the development of rural areas in the region of the future plans of the past. This modern approach to the strategic planning process are able to make it an important and interesting for each resident. Because of this very important initiative from below - any suggestions and measures should be considered and to some extent be reflected in regional and municipal programs. In this regard, we recommend at the organizational stage, the survey population on rural development (application form is given in Appendix .....).

Also for development of the sustainable development of rural areas special bodies should be set up: **Coordinating Council and thematic working groups**

The Coordinating Council is a collegial body, the main task - coordinating the positions of the various departments, representatives of different social groups and segments of the population in the main areas of program development. In coordinating council composed of representatives of the population, regional and municipal administration, deputy corps businessmen and development center. Given the importance of the development of the program appropriate to the appointment of the chairman of this collective body of one of the Vice-Governor (chairman of the regional government).

At the initial stage, the council allocates priority sectors and industries and manages the creation of the thematic working groups. The working groups may include representatives of business, science, experts say. Coordination Council decides how much of the working groups to be formed and for what specific areas. Typically, the number of working groups varies from 4 to 8.

Organizational stage is preliminary. At the same time, some of the analytical phase of the event chronologically may go beyond the preliminary work in parallel and next steps.

The process of developing the plan (program) should be open: the administration, the public and all interested parties should be clear and the main goal of the implementation phase. This increases efficiency and helps to ensure a complete and accurate information.

### **3.2.2 Analytical stage of program development.**

#### **Sources of information**

To obtain the necessary information the following sources can be used:

1. Official statistics in the context of municipal and economic activities, and social statistics in the Federal Plan for statistical purposes,
2. Department statistics, formed branch executive power and local self-government;
3. Indicators to assess the effectiveness of the executive authorities of the Russian Federation and local self-government (in accordance with Presidential Decree № 825 and № 607);
4. Data from the Central Bank of Russia on the activities of commercial banks and credit institutions by municipalities;
5. Data from the Federal Treasury and financial authorities of the Federation of the current budget system in the region and the fiscal capacity of municipalities;
6. The results of sociological studies and surveys of the population;
7. The results of statistical surveys and studies on various aspects of socio-economic development of rural areas;
8. International standards and guidelines to ensure the objects of life in rural areas;
9. Calculated data obtained on the basis of available information base;
10. Results of surveys of rural population (gatherings, meetings, etc.);

11. Polling results Village Head and officials of rural administrations;

12. Results of surveys of investors and large employers about the situation and issues of concern to the business of rural areas;

Analytical work may include the following activities:

- The formation of the initial data base for the analysis;
- Sociological Research;
- Conduct "expert" interviews;
- Analysis of the information base, a synthesis of case studies and "expert" interviews;
- Developing typologies of rural areas
- SWOT and PESTLE - Analysis
- Drawing tree of problems and potentials

Forming the necessary information base is based on the collection and analysis of quantitative and qualitative data (case studies, "expert" interview).

The basis of quantitative analysis is primarily an assessment of available official statistics (statistics of the population, the labor market and employment information by sector (agriculture, forestry, industry, data on the social and engineering infrastructure).

Far as the database must be a comparative analysis, ie comparison with other regions and with the indicators adopted as a standard, with one hand. On the other hand, the analysis of time series, ie analysis of changes in the last 5-10 years. Used in this criteria are divided into "soft", which can not be objectively evaluated (opinions and expertise of individuals) and "hard", defined objectively measurable quantities (statistical and departmental information).

When using statistical indicators also need to be careful - there are cases of distortion, as well as the very system of statistical indicators of social and economic development of the municipalities require revision and harmonization with accepted accounting and reporting at the international level.

### **Typology of rural areas in the region**

In Russian regions with different climatic and socio-economic conditions during the analysis phase of development of the sustainable development of rural areas is expedient typology of rural areas in the context of municipal areas. This typology allows a deeper analysis of the social, economic, environmental and institutional sectors in rural areas and offer special package of measures for sustainable development for different types of rural areas.

Typology - an indispensable stage of any investigation of the set of similar (related) phenomena, phase ordering of knowledge about the phenomena being studied - the separation of the phenomena studied by type. Type is a combination of (a group, a lot of) events that show common

essential qualitative features that distinguish it from other, similar in genesis and functions of the phenomena.

During the typology can use the following statistical data: Materials Statistical Abstract of the territorial bodies of the Federal State Statistics Service of the Russian Federation on the subject of "The main indicators of socio-economic status of municipalities and municipal districts of the subject of the Russian Federation" (section "Population", "Work", "Living Standards", " Education", " Health", " Mining and quarrying, manufacturing, production and distribution of electricity, gas and water "(the volume of shipped goods production, works and services in-house, production in volume terms)," Agriculture economy "(agricultural products (in all categories)); "Trade and Services" (retail trade, public catering turnover, the volume of paid services), short data book "The subject of the Russian Federation in the numbers." "The main figures of financial-economic activity of agricultural enterprises for .... years. "; statistical collection "Agriculture of the RF subject ..... years. ", " Demographic Yearbook of the subject of the Russian Federation .... Mr. "and others as well as materials of regional and district administrations in terms of work performed by the activity" building ", " territorial planning scheme subject of Russia "; passport municipal entity of the Russian Federation and other.

The basis of the typology of rural areas put different features: a selection of natural and agricultural areas, natural history and the economic division of the territory, etc. The Organization for Economic Cooperation and Development (OECD) has developed a typology that is used by most of the developed countries of the world on which emit mostly urban (urban), largely rural (rural) and intermediate (semirural) territory on the basis of three criteria:

1. *Population density.* Rural is the area if the population density is about 150 inhabitants per km<sup>2</sup>.
2. *Percentage of population living in rural communities.* The region is predominantly rural, if more than 50% of the population live in rural communities, predominantly urban if less than 15%, and in between, if 15% to 50% of the population lives in rural communities.
3. *The presence of the city center.* Intermediate - a city center with a population of over 200 thousand, the region is assessed as predominantly urban, if the city center has more than 500 thousand inhabitants.

During the typology of rural territories of the Russian Federation to carry out appropriate selection of types of rural areas: by type of population dynamics, age structure, security of the population of social infrastructure, investment activity, the level of economic development of agriculture and the whole economic structure of municipalities, the current state of socio-economic environment of rural areas, the potential socio-economic development and the development of polarization with the release of priority development areas, support areas, etc. Thus, the typology is implemented at three hierarchical levels:

**Level 1** – analysis of social and economic development of rural areas;

**Level 2** – the integrated assessment of the socio-economic environment and the potential for development;

**Level 3** – program Identify the major trends in the development of rural areas.

These types need to find a territorial expression of the same name and illustrated thematic maps in the scale of 1: 2,500,000

### **Criteria and methods of typology**

Taxonomic unit typologies are rural municipalities (administrative regions) of the subject of the Russian Federation.

Algorithm for the study of typology and involves several sequential steps:

**Stage 1** - Processing of basic indicators of the dynamics of the state of social and economic development of rural areas;

**Stage 2** - the selection of thematic types of rural areas;

**Stage 3** - the integrated group identified the types and characteristics of the formation of generalizing.

Array processing is conducted using the methods of cluster analysis. For each group of indicators using linear scaling are indicator values. To process the large amount of data that have diverse dimension values, and, in addition, with both quantitative and qualitative data, this method is more suitable. It is more accurate, compared to the ballroom and rating and is based on the definition of reference points (maximum and minimum values). Thus, this method indicates the actual location of the indicator each location between the reference point. The calculation is performed using the formula:

$$Index = \frac{X - X_{min}}{X_{max} - X_{min}}$$

where

X – first value in the row

In using the linear scaling of the indicators is given to the dimension of 0 to 1. Score for each indicator based on equal priority indicators, calculated as the geometric mean or average of the indices. In turn, general integral indices are aggregated typologies (capacity, etc.) are specified using expert estimators influence of factors from 0 to 1. Individual indicators further statistical analysis of distribution, ranking and rating ballroom (for quality characteristics). When conducting preparation of the following typology it is recommended to creation of following maps of rural territories (across municipalities):

### **Typology of demographic, social and institutional environment. (Map):**

The density of the population;

Types of population dynamics;

The age structure of the population;

Provision of the population social infrastructure.

Consumer spending

Employment in agriculture and other sectors of the rural economy

The institutional environment of rural areas

**Typology of the economic environment (map):**

The structure of the rural economy.

The level of development of agricultural production.

Industry types of specialization of agricultural production.

Level of level of investment activity.

Fiscal capacity of the population

State of socio-economic environment

Recreational potential of rural areas.

Small businesses in rural areas.

Local brands. Gastronomic map of rural areas.

**Potential socio-economic development of rural areas (maps):**

Potential socio-economic development of rural areas

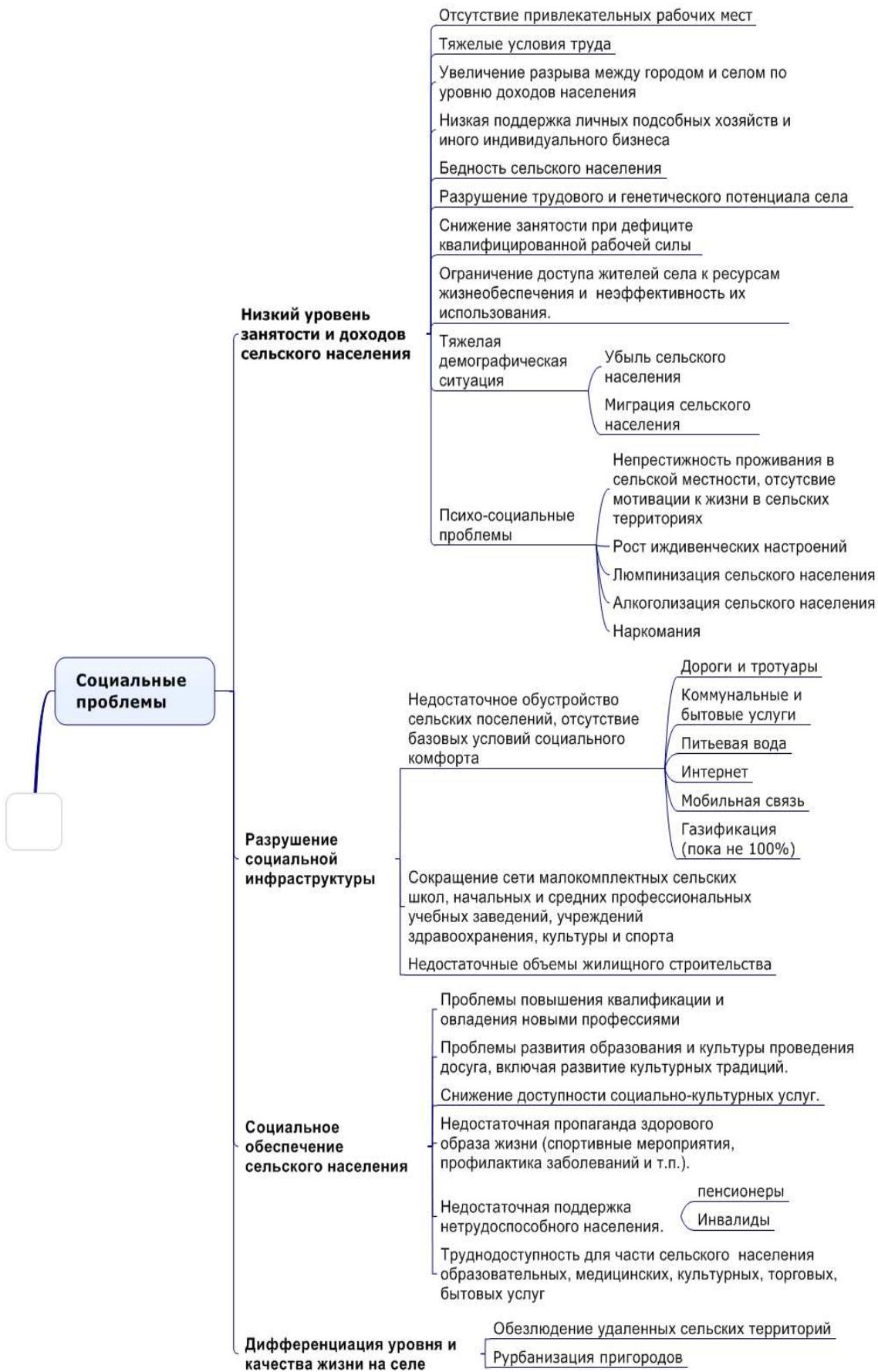
Types of areas with the OECD approach.

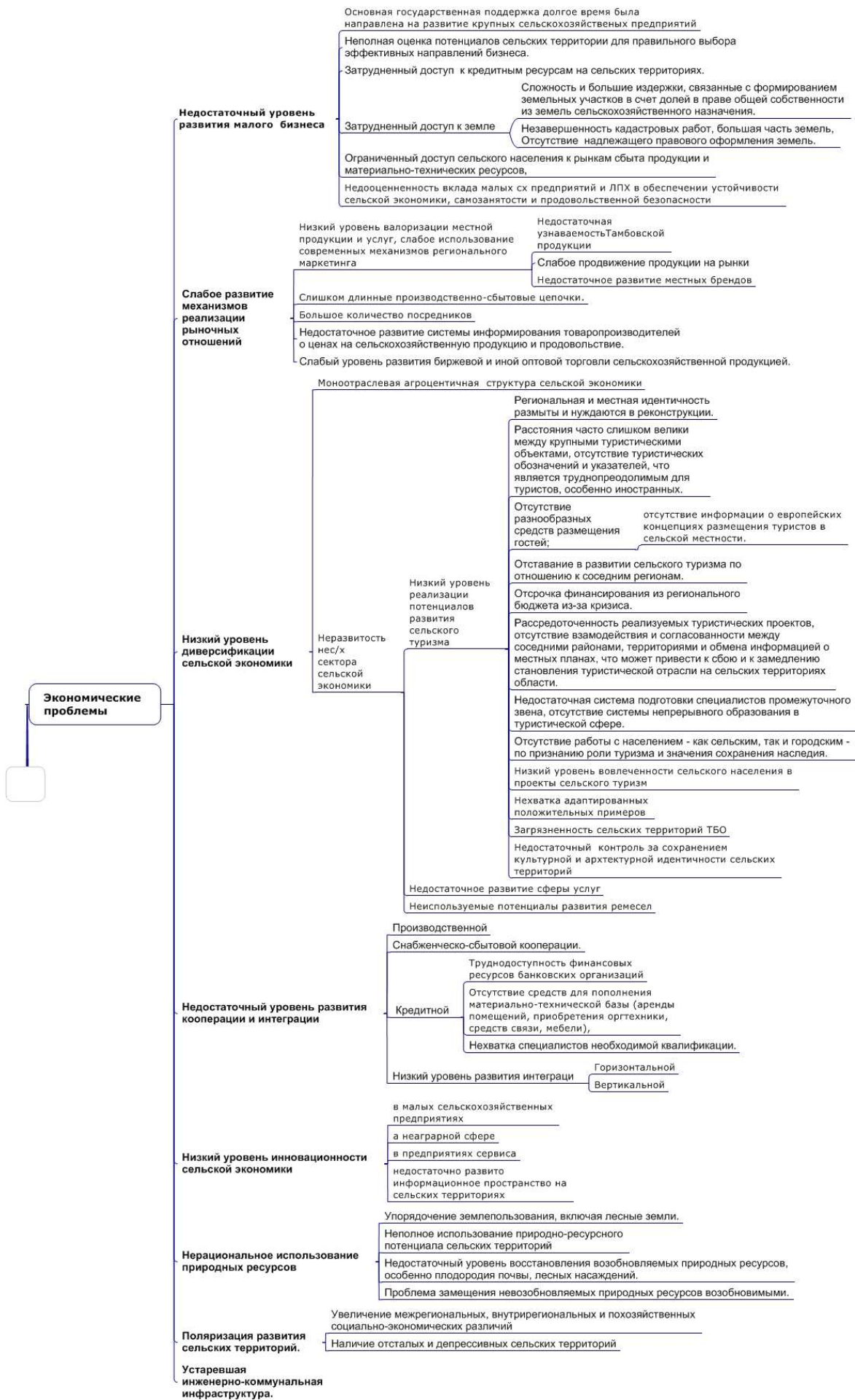
Possible algorithm of typology and examples of some cards - in Annex 5.

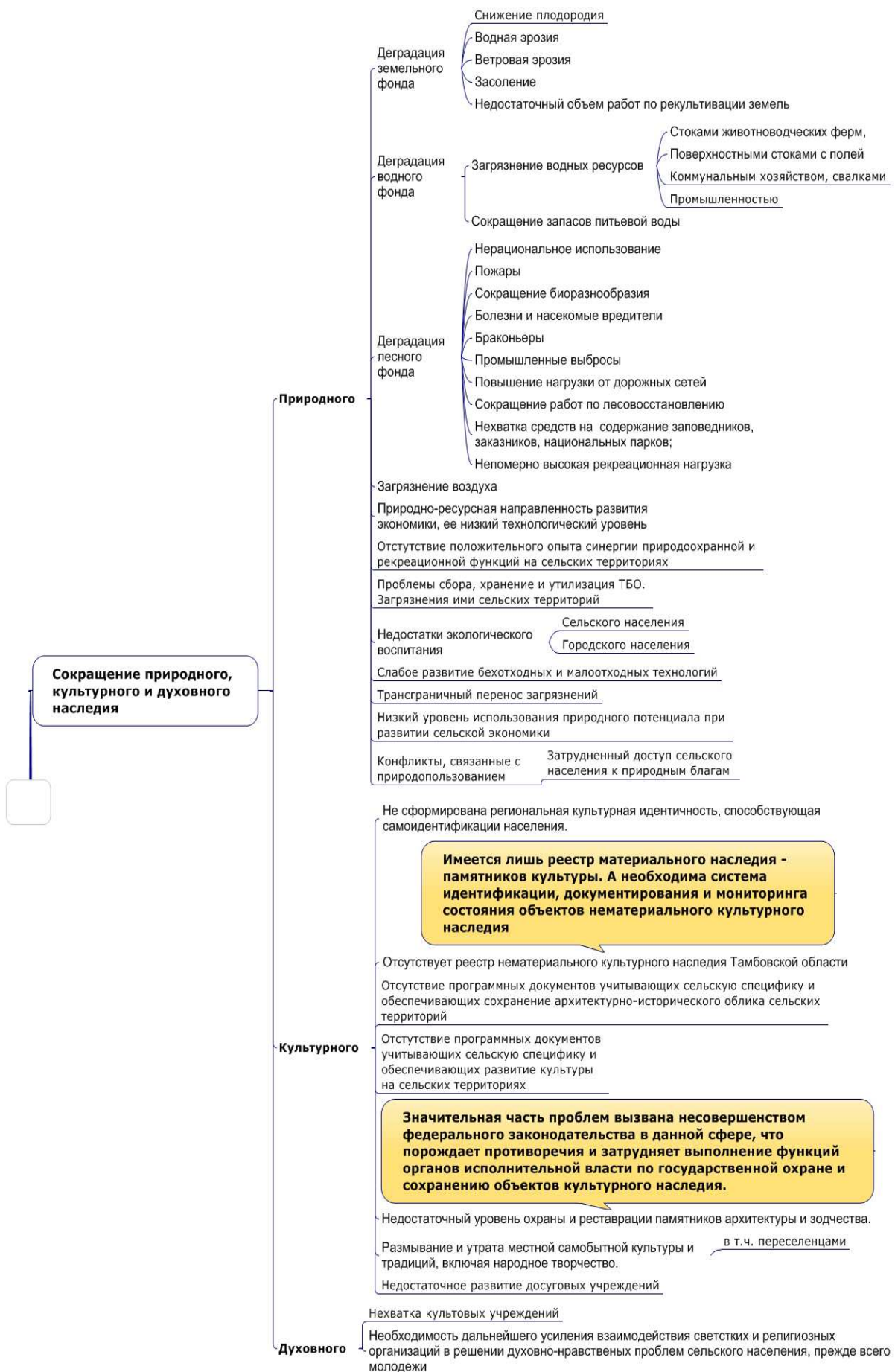
**Development pressing problems tree of rural areas in the region**

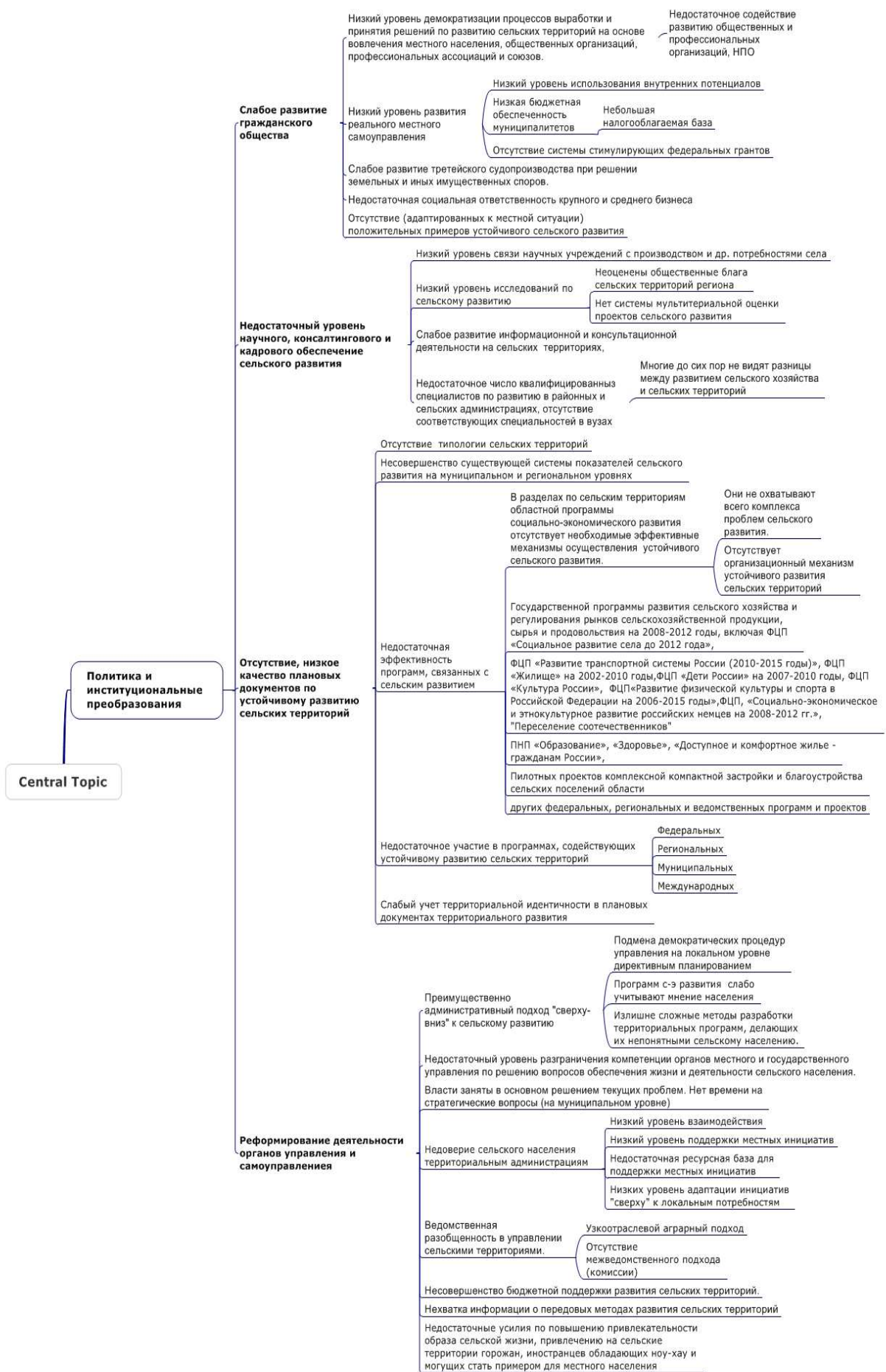
Identified in the analysis of actual problems of sustainable development of rural areas it is advisable to structure in the form of a corresponding "problem tree". This will determine the level of problems, and also to the next stage of goal setting, identifying problems and block actions to address them.

Below, as an example, a flow of current issues of sustainable development of rural areas of the Tambov region. It is important to bear in mind that in each region there are common problems, but it is also important to identify the specific problems of each region.









The attentive reader will find that some of the problems are duplicated in different blocks. In these small failures not a big deal, it only emphasizes their importance and / or complexity. Important - that in the tree problems reflected public opinion and the administration.

### **3.3 The role of the public and district programs of SRD in developing regional SRD programs.**

Public SRD policy primarily aimed at improving the welfare of the local population, the development of rural communities. Therefore, the focus of the regional programs are the interests of rural people, without which there can be participatory its qualitative development.

Presented in percentage points 3.3.2. and 3.3.3. typology and tree construction problems in rural areas are among the modern methods of public involvement in the process of rural development, the recommended SRD program design: surveys; interviewing; Participatory Rural Appraisal (PSA); metaplan – visualisation methods, brainstorming, visualization development process through the cartographic materials focus groups, mental maps to the construction of the problem tree (building "problem tree").

Particularly important part of the population in the development of regional programs URST that are not the subject of detailed consideration in these methodological recommendations. However it is important to understand the relationship between the regional and district SRD programs - in the first set more general conditions of SRD each of the Federation, agreed with the federal policy of rural development. District of the "bottom" is filled with the policy relevant activities and projects that are difficult or impossible to identify the "top." This determines the importance of involving local people, than whom no one knows the local problems and opportunities specific rural areas - his small hometown. The population is the main carrier of information about the area, its traditions and identity, without which it is impossible to form a quality of SRD program. Experience shows that if citizens see that their opinion is taken into account in the development of programs, they are more interested in its implementation

Therefore, the following sequence in the development of SRD programs on various administrative and territorial levels is recommended:

1. Development of the draft regional SRD program
2. Development of district programs of SRD
3. Actualization of a regional program with the district and its adoption (§ 3.5.).

Thus, public opinion will be taken into account in regional programs of SRD. Possible general scheme of interaction between participants in the development of SRD programs at municipal area is shown below.

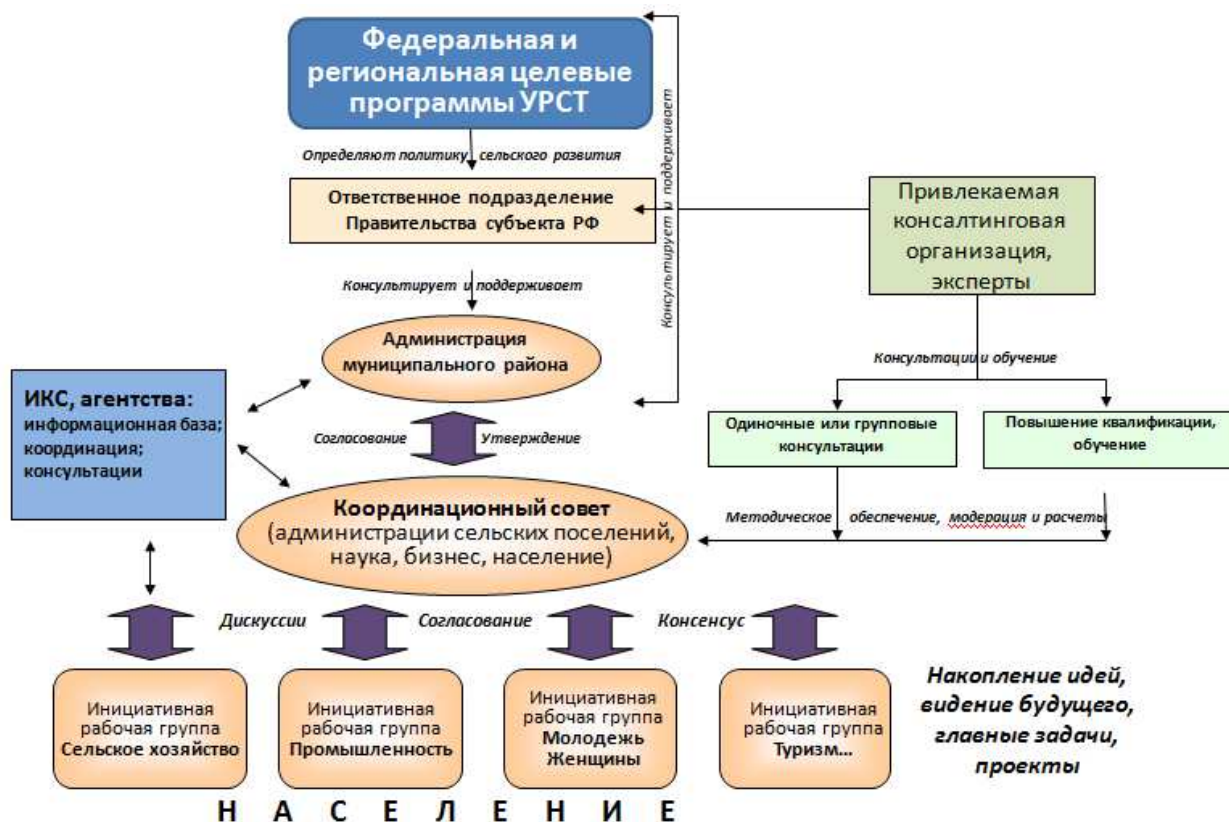


Fig. 3 The scheme of interaction between members of the development SRD programs at the municipal area is as follows

Analytical stage is the most complex, voluminous and responsible for program development. The fullness and depth of its holding, the degree of participation, administration and all other interested parties will directly depend on the quality of policies developed and their perception on the ground.

### 3.4 Goal-setting, the formation of tasks and activities of the program blocks

According to the methodology of system analysis we transform "problem tree" in the "tree of goals": Target of program

*First order problem*

*Objectives n-th order (blocks of program activities)*

*Measures to ensure the solution of problems*

Further, as an example, here are excerpts from the long-term program "Sustainable development of rural areas of the Altai Territory" for the years 2012-2020 " (approved by the Administration of the Altai Krai of 02.08.2011 № 20)



Fig. 4 Formation of tasks and activities of the program blocks So the first problem has a block of program activities:

1. The development of non-agricultural activities
2. Grants for business development
3. Development of family livestock farms
4. bee keeping
5. Development of rural tourism
6. Activation of the consumer and credit cooperatives

Examples of support for the fifth unit of program activities "rural tourism" can be subsidizing part of the cost for the construction of accommodation, including works by connecting your gas, water, sewage and electricity in rural areas.

It also includes the development and implementation of standards, guest houses, hunting and fishing lodges.

The following measures for the development of tourism, identified during the development of regional SRD programs be supported through the regional program:

- Development of Crafts
- Organization stations and repair shops
- Trade Organization spirits by the glass, shop-studio curtains
- Provide personal services (repair tech household appliances, hairdressing, repair and tailoring, shoe)
- Organization fast food
- Development of roadside service
- The opening of private dental
- Construction of recreation
- Creating pottery, shop for stone products
- Organization of mini-zoo and a mini-farm
- Construction of a hotel complex on the basis of COCs "Mokhovaya"
- Implementation of the "rural estate" in the area Klyuchevskoy
- Tourist and sports complex "tipsy"
- Implementation of the "Recreation Area terrace on the water" Galley "in s. Makarevka

These activities in particular will ensure the commissioning of placing nearly 2,900 seats. Similarly designed blocks of program activities, mechanisms and indicators for other program needs.

### **3.5 Discussion and adoption of the program**

During the development phase of the program or project base case of the sustainable development appropriate to discuss with the Public Chamber of the region, industry associations and the deputies. To do this, it makes sense to present the project in the local press, with perhaps some maps, which allow more fully represent the state and development. Additionally, you can use the database in which data are available for specific projects.

Project is discussed at round tables, conferences and meetings with the public, businesses and other interested groups. In this case, it is not about to simply secure the agreement of the participants. All components of the strategy should be critically reviewed, and all the bugs and errors are fixed. Communication between the administration, consultants, entrepreneurs and the public at this stage should be taken very seriously. Otherwise there is a danger that the plan will not be understood or accepted, that, accordingly, reduce the chances of successful implementation.

The comments, suggestions, and systematically processed. If the proposal can not be considered, it must be justified and reflected in the system documentation. Then additions are made to the project and developed the final version of the Strategic Development Plan. For this work, takes response **a coordinating committee.**

A revised, if necessary, re-published in the media, the public to make sure that her opinion was taken into account. May publish only material and discussions, if not to make significant changes to the original document.

The final version of the program can be executed as well as the project and be sure to include a section that reflects the expected performance.

I think that is an example could be given the performance indicators of Altayskiy kray program. The results of the main stages of the preparation of the program should be covered by the local press, discussed at round tables, conferences, seminars and meetings with the public. In order to overcome the deep-seated distrust of Russia in various plans and programs appropriate maximum involvement in their development and implementation of the local working population.

In the development and implementation its appropriate a public discussion and involvement of non-governmental organizations, civil society, regional agricultural unions, farmers' unions, agricultural cooperatives of regional level.

In the process of developing a program its appropriate to use as a scientific and methodological support, research and development, economic assessment and evaluation experts and the experience and views of the population on the most appropriate ways to develop rural areas in the formation mechanisms of development and refinement of the strategy development.

In developing the program should be provided sections that would allow monitoring and analysis, evaluation of the effectiveness of program activities, the identification of best practices and its subsequent distribution, feedback and develop proposals to update the program during its execution.

### **3.6 The main problems of elaboration of the sustainable development of rural areas**

Analysis of programs developed in our country in the framework of rural development policy, has identified the following problems:

***Weak consideration of the specific areas:*** existing programs, including socio-economic development similar to each other, since Developers often copy their superiors. They are slightly based on local potentials and territorial identity, do not consider the specific rural, local "highlights" typology. This misuse of local capacity dramatically reduces the effectiveness of your program.

***The dominance of the administrative team approach "top-down" to the development of areas.*** When developing programs, especially at the local level, there is a substitution of democratic procedures involve the public in the planning and management policy planning. As a consequence, the existing development programs involved little creativity of local people, who know better than anyone local problems and potentials. The problem also lies in the fact that software developers are familiar with best practices in public involvement in the planning of rural development. The existing ways of working with people in this area are scarce and often formal. Development based on the views of the population requires more than the usual time, and it is given enough for the job.

***The low level of interaction between the government and the public:*** weak support for the initiatives of the population, lack of resource base to support them, the low level of adaptation initiatives "from above" to local needs, distrust of the rural population of territorial administration.

The disadvantages of the existing programs should also include ***overly sophisticated development of regional programs***, which make them unintelligible to rural populations. The more com-

plex the methods used, the more narrow the co-developers of the program. In some cases, without these techniques to manage and resolve the situation can be found in a simplified explanation of the method and the visualization of the results in a clear wide range of maps, charts, drawings, etc. You should also pay attention to the explanation of the population is a complex mechanism for the implementation of programs and opportunities to simplify.

There are a few more that should be considered in the development of programs:

Areas are often not ready to effectively use large tools

Lack of social responsibility of large and medium-sized businesses

Many people still do not see the difference between the development of agriculture and rural areas, as there is no clear definition of rural areas

part of a strong dependency on the ground: waiting for the power of money and the top will indicate what to do, wait for large investors are waiting ready (standard) solutions from science and government.

Imperfect institutional arrangements for sustainable development of rural areas: industry, and not a territorial approach to development, the lack of local development institutions (agencies, IRS, cents development, etc.)

HR problem: the lack of a number of necessary specialties for rural development in universities and colleges. Accordingly, lack of experts on sustainable rural development.

Lack of information on best practices in rural development. Not doing enough to improve the attractiveness of the image of rural life in the rural areas to attract residents, foreigners have the know-how and which could become a model for the local population. Lack of (lack of) adapted to the local situation of positive examples of sustainable rural development.

Comprehensive program name sustainable rural development creates the illusion of many that it is not the target, and the complex and must incorporate all development activities (particularly at the municipal level and the level of rural communities)

imperfection of the existing system of indicators of rural development at local and regional levels

Lack of environmental restrictions

On the ground, many are not ready to participate in contests, grants

## 4 Grant support measures for rural development

Financing of projects of economic and social development of areas with the help of grants is a new trend, gaining in popularity in the region. Funding through grants involves the preparation and submission of projects that reflect local needs and reflect the initiatives of rural settlements. These projects are funded through a competitive process.

Financing of projects of economic and social development of areas with the help of grants is a new trend, gaining in popularity in the region. Funding through grants involves the preparation and submission of projects that reflect local needs and reflect the initiatives of rural settlements. These projects are funded through a competitive process.

Foundation of funds allocated for grants can be formed both from the budgets of different levels, and by donations from businesses and individuals. Fund, which provides grants, can be formed from a number of sources, for example, means business and budget, business and international organizations. For a grant to participate in the competition, that is, prepare a package of tender documents, describe the project, make a budget for the project, etc. Knowledge of design culture does not come by itself. When introducing the region grant competitions advisable least initially provide training preparation of applications for participation in the competition. With such training successfully addressed representatives of the regional non-profit organizations for which the grants are the main source of funding. Regional grants can be distributed under the regional programs, as part of the regional contests or in the form of so-called governor's grant, which is essentially also means the target competition. Grant support mechanism is used in programs of small business development implemented by the Ministry of Economic Development of the Russian Federation. Get information about the grants and subsidies to small businesses, including in rural areas, are in the regional and district funds to support small businesses. Direct subsidies are provided for the creation of new enterprises, their engineering and technical support, involvement of consultants, service credits, participation in fairs and exhibitions, patent-licensing arrangements, including Registered brand products for export certification, including environmental, training. Separately allocated support start-ups of small business, innovative companies and institutions that provide assistance to small businesses. Specifically for rural businesses - farmers operates a grant program to support beginning farmers Grant (fiscal subsidy) covers part of the costs actually incurred by the novice farmer to create a peasant (farmer's) economy. For 2012-2014. in many subetah Russian Federation has adopted such programs (Tomsk, Kurgan region, the Republic of Mordovia, etc.).

According to the draft concept of FTP (Federal Target Program) "Sustainable Development of Rural Areas for 2014-2017 and for the period up to 2020" is supposed to use the grant mechanism to support the initiatives of rural communities. Draft concept FTP identify areas of projects that can be supported. This list may be supplemented and specified according to regional circumstances and needs. Federal funds are allocated to support local initiatives to provide in the form of subsidies to the budgets of the Russian Federation on the implementation of grant programs.

FTP draft concept states that the Ministry of Agriculture of the Russian Federation will establish the basic criteria for the selection of projects that can be clarified with regard to regional and local conditions. Some regions have already used the grant mechanism to support the initiatives of rural communities. Consider using specific examples.

#### 4.1 Altai (grants of the Governor)

In the Altai region in 2011, established governors grants to diversify the economy. Grants can be obtained as the citizens and residents of rural areas, with the share of the latter in 2011 had three-fifths of all funds (14 projects worth 14.9 million rubles.).

In 2011, were announced the following nominations: family farm, rural entrepreneurship, women entrepreneurship, private kindergarten, private sports facility, a new energy, clean municipality. In 2012 were added to the category: excursion tourist facility, a private dental clinic in the village, textiles Altai.

As the name nominations supported by grants from business activities in rural areas in many different directions. Like to draw attention to projects which are of environmental focus: it is the use of renewable energy sources, arrangements to transport and sorting of solid waste, construction of water supply and sanitation for rural housing.

All grants are available for co-financing. Thus, through the development of women entrepreneurs in 2011 were awarded grants for the provision of public services (water, sanitation), the organization of private dental offices) for a total of 6.5 million rubles .. With 40% of the projects were grant funds, 60% - co-financing by the applicants.

In 2012 under the direction of "sightseeing tourist attraction" is supposed to support the creation of museums honey, cheese, milk, and a village. The establishment of such museums contributes to the promotion and valorization of regional brands, the development of rural tourism in the region.

The theme "Textile Altai" shows an example of the use of domestic resources for development. Textile production in the Altai region has never been, but raw materials for the textile industry - linen and wool - are available in abundance in the peripheral areas of the province. Organization of spinning and textile production, processing of raw materials will help create new jobs in rural areas.

Another line of gubernatorial grant aims to support socially-oriented non-profit organizations. Grant of the Governor of the Altai Territory in the activities of socially oriented non-profit organizations in 2012 claimed 77 organizations. Of the 77 examined 50 applications were from rural areas: in the form of grants in 2012 were allocated 8 million rubles. Grant size from 50 to 230 rubles. Number of participants and, consequently, the number of municipalities are prepared and presented interesting projects increases each year. List the subjects of supported projects in rural areas: the development of rural tourism - equestrian, water, youth, etc., support for families with children (alternative missing kindergartens of short-stay children and temporary nanny), helping the seniors in obtaining skills a computer on the Internet, local history and the study of local history, intercultural and inter-ethnic cooperation, the establishment of rural parks. The applicants - most different non-profit and community organizations. Thus, youth public movement Pavlovsky District implements the project "Live, my village!". In the area of public Zalesovsky war and labor veterans, armed forces and law enforcement agencies to prepare a project to reconstruct the history of the village of Bolshoy Kaltayev in documents and photographs... This list shows that the projects with the participation of socially oriented non-profit organizations are implemented in areas much broader

than an accomplishment, but it is equally important for sustainable rural development and targeted to meet the needs of specific groups of people.

#### **4.2 Arkhangelsk Region (grants for rural territorial self-government (TSG))**

In the Arkhangelsk region in 2001 working program of grants from the regional budget to support rural development. The initiator of this program was made more than ten years ago, the Institute of social and humanitarian initiatives. Program has taken under his wing head of the Arkhangelsk region. Currently, the program is implemented through the regional Ministry of Regional Development.

The program's purpose is to: rural territorial self-government bodies are developing projects to revive their villages, and regional co-financed by the budget of the costs of these projects. Grants are distributed on a competitive basis to the applicants. The project assesses the competitive commission. Prerequisite - government funding should not exceed half of the amount required for the project, the remaining funds should attract applicants from other sources. In 2012, the grant will be allocated 11 million rubles. Stimulate the TSG and various competitions and training sessions from the regional budget. Hold conferences with involvement of civil society activists from other regions. Grants helped solve a variety of residents of the villages of the problem. For example, in the area of set Konoshsky water tower, adjusting thus supply several villages in Pinega repair roads in Solvychegodsk debris cleared a beach. There were projects for the development of rural tourism in the collection and sale of wild berries, the development of beekeeping. Through grants from rural TSG solve many economic issues, a busy cultural and historical and patriotic events.

#### **4.3 Perm region (grants fund to support social initiatives)**

An important resource for rural development - an initiative of local people to improve the environment, improvement of rural communities, social services, rural culture and sports and handling other tasks that are important for the residents of a particular rural area. Support may be by grant funds through the support of social initiatives, as well as in other forms (regional grant programs governor grants).

In the Perm region since 2003 works Social Initiatives Support Fund "Assistance". It should be noted that the title has a lot of regional funds, but the perm fund is different because it works in rural areas. Annually, there are interterritorial grant competitions. From 2003 to 2010, supported by more than a hundred projects worth 3.4 million rubles. Subject of projects:

- Formation of youth responsible attitude to health and sports
- Employment and Youth Employment, work on career counseling, development of entrepreneurship among the youth;
- Prevention of child neglect, juvenile delinquency and social hazards;
- The development of civil and social activity among young people, support for volunteering;
- Military-patriotic education of youth and students.

Nominations in 2012:

- "Sports Village" - projects for the establishment, arrangement of sports and playgrounds, repairing sports, cultural facilities,

- "Country Park" - projects to build and develop the rural parks, recreation areas,
- "Living Water" - projects to clean lakes, rivers, the arrangement of coastal zones,
- "Country Lane" - Neighborhood upgrading projects, including projects to repair roads, street lighting, sidewalks arrangement.

Supported projects for equipment playgrounds, sport competitions, creating outbound library club for children with disabilities, equipment cabinet healthy child and organization of the school for parents and infants prevention, creation of school puppet show and travel to remote villages, the organization of training seminars for young entrepreneurs, the publication of historical anthologies villagers to participate in World War II, the creation of an Internet resource of the best rural teachers.

Implementation of such projects not only promotes landscaping rural communities, but also the growth of interest and disclosure initiatives rural people, especially the youth.

## 5 Foreign and domestic experience in the development of rural development programs

### 5.1 EU experience

Rural development program developed in Europe in the late 1980's. In recent years, how to develop programs for sustainable rural development in the **European Union** has changed, which you should pay attention.

expanded comprehensive interagency and inter-sectoral approach

highlight the environmental and institutional component of the projects supported by the program

Efforts in a "bottom-up" program is based on public opinion, because the higher the degree of participation of the population in the developed programs, the more valid the results and the extent to which higher

simplified programming techniques to make them understandable to the widest range of potential co-developers.

In the European Union, much attention is paid to support rural communities in the direction of the Common Agricultural Policy, which is called LEADER (LEADER - is an abbreviation of the French phrase "the relationship of actions aimed at the development of the rural economy"). LEADER program runs from 1989 Characteristic features of LEADER program are: decentralization of administration and finance, the territorial approach, the algorithm is a "bottom - up", partnership, networking, innovation, cross-sectoral integration and cooperation. Funding for rural development is carried out together from the EU budget and national budgets through the agricultural departments. At each successive stage of the single Agrarian Policy content of this program is slightly different. For example, in 2000-2006 supported initiatives in rural communities in the implementation of new technologies and know-how to improve the competitiveness of agricultural products, improve the quality of life in rural areas, the promotion of local products and the specific disclosure of the natural and cultural potential of rural areas. In 2007-2013, supported by measures to improve the competitiveness of agriculture and forestry, improve the environment and countryside, improve the quality of life in rural areas and encouraging diversification of the rural economy. As you can see, support areas were sufficiently wide to help keep a variety of projects.

To help rural communities in the preparation of projects for funding from the LEADER program in the EU for regional agricultural departments special units, providing training of the working groups of rural communities and rural community representatives explaining how to prepare the project and to apply for funding. Also accompanying the working groups in the implementation of projects and monitor the implementation of projects.

Direct assistance to the Working Group to consultants working in non-governmental organizations, and holding practices with the public. Non-governmental organizations exist by grants from the EU, regional budgets, philanthropic foundations. Occasional international conferences, which bring together the leaders of the working groups and help them to governmental and non-governmental institutions in which to share experiences and know-how in the field of rural development.

Projects are funded on a competitive basis, with the amount of money large enough to suit almost all applications. For example, in 2010, in the region of Baden-Württemberg (the subject of the Federation of Germany) in the competition for funding under the program, nine projects were submitted and supported - seven. The projects cover the following topics: the development of sheep in the mountains, marketing lamb and traditional gastronomy based on lamb, the use of old buildings to create museum-workshop of local crafts, old stone barn conversion in a rural tourism center, web design and online network of travel centers and village guest houses along the banks of the Danube (international project), multimedia information system for tourists traveling through the countryside, so that they are using the means of satellite mobile communications, at any time to obtain information about a rural community which they are and that useful and interesting there has, preparation and installation of information boards along the tourist mountain biking routes.

## **5.2 Rural development programs in regions of Russian Federation**

### **5.2.1 Altay region**

Altay region - one of the largest agricultural regions of Russia and the largest in the Urals. Agriculture plays a key role in the economy of the region - about 17% of the gross regional product provides agricultural production in the industry (as a share of about 17%), the share of food processing industry is 35%. The edge of the Russian leader in the production of cheese, flour and cereals. About 47% of population of the region lives in rural areas, with the feature of the region is almost evenly dispersed rural populations throughout the region - as a consequence of a large number of municipalities, as well as quite extensive engineering, road and social infrastructure.

Based on the need to supplement the measures to develop agricultural production projects integrated and sustainable rural development, covering other areas of the rural economy and improving the living conditions in rural areas in the region, it was decided to develop a long-term program for sustainable development of rural areas of the region. In developing the draft regional program, consider the following.

Activities aimed at the development of rural areas (often some social sectors, infrastructure, etc.) are implemented by almost all line agencies and ministries. Of the more than 50 special programs Altai almost 70% more or less implemented in the rural regions of the Altai Territory. In 2010, as part of the federal and regional programs for the development of municipalities of the Altai Territory was sent over 7 billion rubles. The total amount of funds for rural development with the implementation of specific investment projects and non-program of activities of the executive authorities of the region exceeded 20 billion rubles. (excluding subventions to regional budget).

Given the importance of rural areas in the region's economy and the trend of federal rural development policy, in 2001, adopted a long-term target program "Sustainable development of rural areas of the Altai Territory" in 2012 - 2020." The program developed by the Centre for sustainable development of rural areas RSAU-MAAT named after K.A. Timiryazev together with specialists of the Main Department of Economy and investments of the Altai Territory. The same management with the Department of Agriculture of the Altai region is the state customer of the program. Inter-agency coordination in the program laid the wider set of directions, combining activities and agricultural lines, and economic ministries. The purpose of the program - the creation of social and eco-

conomic conditions for the integrated and sustainable development of diversified rural economy, employment and quality of life of the rural population.

**Objectives of the program:**

- diversification of the rural economy, the development of non-agricultural activities, increasing labor force participation and the expansion of the sources of his income;
- Improving living conditions of the rural population and housing for young families, young professionals in rural areas, including integrated compact construction;
- improving the quality of education, health, culture, sports, including by renovation, new construction of social and physical infrastructure in rural areas;
- Support for local initiatives, the formation of a positive attitude to the rural life.

Program activities are divided into four blocks. The first unit is aimed at increasing employment in rural areas, promote the development of agricultural and non-agricultural activities. Altai region has unique opportunities for producing and processing of almost all types of crops and livestock production, diversification of agricultural production, the development of activities such as the collection and processing of wild plants, fish farming, bee keeping, arts and crafts, rural tourism and agro-tourism. The main mechanism in the framework of the activities of this unit is to subsidize the interest rate on loans for the development of non-agricultural activities at the expense of the regional budget. Also provides subsidies for the development of family dairy and beef farms. For the formation of appropriate material and technical base of small businesses and entrepreneurs who non-agricultural activities, as well as individual projects introduced a system of grant support. The second set of measures aimed at enhancing housing in rural areas. Activities of this unit coincide with the federal program "Social development of village" to improve access to housing in rural areas. A separate area of the block is the complex of measures a compact development of rural communities. To promote the implementation of the directions offered by the federal and regional budgets construction of engineering infrastructure, roads and improvement of intra new neighborhoods. Given the fact that the integrated compact construction is one of the real ways to improve the comfort of living in the countryside, in the first phase of the program is proposed to hold a competition among municipalities for partial co-financing at the expense of the regional budget development projects of integrated compact construction. The implementation of social welfare payments for the construction and purchase of housing, as well as subsidies for construction projects and integrated compact construction is based on the order approved by the regulations of the Altayskiy Krai Administration.

Depending on the amount of the projected residential development pilot projects will be grouped in the following categories:

- first nomination - construction projects in the residential areas of at least 10 homes sold in 1-year total cost of not more than 72 mln;
- second category - construction projects in the residential areas of at least 20 homes sold in a period of not more than 2 years with a total value of 120 million rubles.;
- third category - construction projects in the residential areas of at least 50 homes sold in a period of not more than 3 years, worth up to 264 million rubles.

In addition, with the participation of the regional budget and the construction companies and organizations will be carried out by a special catalog of projects for low-rise buildings of various categories of households and adjoining buildings on the site of regional autonomous institution "Altai regional center of information and advisory services and agricultural development."

The third set of measures - improving the quality of education, health, culture, sports, including by renovation, new construction of social and physical infrastructure in rural areas. Reconstruction, construction of health facilities, education, culture, infrastructure at the expense of the federal, regional and local budgets in the Targeted Investment Program of the Altai Territory. Traditional areas of the federal program "Social development of village complemented by regional component, which includes subsidies for the improvement of rural parks, grants for the construction of solid waste storage facilities in rural areas.

The fourth set of measures at the expense of the regional budget will be carried out a series of competitions for rural areas and communities (national, cultural, educational), sporting events and competitions, competitions for the most well-appointed village. To encourage the development of cultural centers, renovation, construction of sports facilities is proposed to expand the mechanism of grant support municipalities. As part of the evaluation criteria is proposed to use the degree of participation of local businesses in the development of these facilities. In addition, within a block of activities will be prepared by a series of programs and films to promote the rural way of life.

Implementation of the program to be implemented in two phases. Stage I in all municipalities of the Altai Territory guidelines will be prepared and organized training of municipal employees, project proponents, and then developed and adopted by municipal programs for sustainable rural development. Phase II will co-finance the program activities of the federal budget.

### **5.2.2 Belgorod region**

Belgorod Region is one of the Russian leaders in the field of rural development. The successes achieved in this direction through the cluster approach to the development of social infrastructure in rural areas. Complex social cluster includes all the necessary infrastructure elements that determine the quality of life in rural areas. The main objective of the cluster approach - the creation of conditions for preservation of the rural way of normal in the region.

Cluster approach for social arrangement of rural areas, provides for the development of social, engineering and transport infrastructure in rural communities, ensuring the needs of the villagers in the social, educational, cultural and personal services. The list of objects in the rural social cluster is defined establishment of social norms based on the rural population. The list of social norms, see Table. 3. These guidelines are designed for the conditions of the Belgorod region. The total volume of the social elements of the cluster is provided in settlements with a population of at least 500 people. In villages with less population cluster community facilities are being built to meet the needs of citizens. In accordance with social norms rural areas are divided into communities where social cluster is present in full and where the social cluster represented the individual elements.

The cluster approach to the conservation and development of villages Belgorod region can restore social objects, and if necessary to build a new, stimulating housing, communal arrangement, thereby providing a complete living environment, in which a villager feels fit and comfortable.

In addition, the region has a system of targeted programs aimed at integrated development of rural areas: the creation of rural parks, support for rural tourism, development of multi-cultural institutions in rural areas, support for family farms, the development of co-operative marketing of agricultural products (net farm stores) , maintained and successfully developed a system of consumer cooperatives.

Table 4 Standards for the formation of social cluster <sup>1</sup>

N n/n	The number of people in the village, people.	The number of settlements in the region	Elements of the social cluster										
			Roads	Plumbing	A cultural center, library	Pre-schools	Schools	Center for providing residential and social services	Medical institutions	District office inspector	Bath	Church	Landscaped cemetery
1.	without population	37	+	-	-	-		-	-	-		-	+
2.	1-10	131	+		-	-	-	+			-	-	+
3.	11-20	92	+		-		-	+		-	-	-	+
4.	21-100	421	+	-		-	-	+	-	-	+	-	+
5.	101-500	563	+	+	-	-	-	+	-	-	+	-	+
6.	501-1000	209	+	+	+	-	-	+	-	-	+	-	+
7.	1001-2000	88	+	+	+	+	+	+	+	+	+	+	+
8.	2001-3000	19	+	+	+	+	+	+	+	+	+	+	+
9.	3001-5000	8	+	+	+	+	+	+	+	+	+	+	+
10.	5001-10000	1	+	+	+	+	+	+	+	+	+	+	+
		1573											

"+" - Stipulated norm    "-" - not stipulated norm

<sup>1</sup> Resolution of the Government of the Belgorod region of 27 July 2007 N 176-PP "On the system of preparation and implementation of the regional project" Social improvement of rural areas of the Belgorod region "

### 5.2.3 Vologda Region

Vologda region has historically been one of the major centers of agricultural production in the non-chernozem zone, especially dairy products and flax. However during the period of economic restructuring rural areas of the region are faced with the same problems as most areas Nechernozemie: the degradation of social capital in rural areas, declining rural population, reduce the herd of cattle, a decline in production of milk and meat, the slow pace of processing of agricultural products.

The concept of sustainable development of rural areas, adopted at the federal level, has stimulated the development and adoption of a similar concept at the regional level (the concept of sustainable development in rural areas of the Vologda region till 2020 adopted 31.01.2011). In the development of this concept in the region, a draft program of agriculture and consumer market Vologda region in 2013 - 2020 years. Executive in charge of the program - the Department of Agriculture, Food Supply and Trade of the Vologda region.

The draft program provides for six routines aimed at developing crop, livestock, small enterprises, and technological modernization, innovation development and staffing of agriculture, improving logistics and distribution networks.

The program objectives are formulated as follows: the development in the area of efficient, well-functioning, high-tech production of agricultural products and food and to create conditions for increased investment in agricultural production, food processing industry, the consumer market of the Vologda region, including investment in rural development.

These goals will be achieved through the implementation of the ten long-term programs, some of which has already been adopted, and the part is still under development. Existing programs: "The development of cattle breeding Vologda region for 2011-2020" "The development of food processing industry in the Vologda region for 2012-2017", "The development of family farms in the Vologda region 2012 - 2020 years", "Conservation and restoration of soil fertility Agricultural land in the Vologda region in 2011-2013 ", " Prevention of weed parsnip Sosnowski in Vologda region for 2011-2013 ", " Social development of the village. " In the course of the last expected to develop a program for sustainable development of rural areas. In the development stage of the program "Development of flax complex Vologda region for the years 2013-2020", "The development of dairy Vologda region for 2013-2015", "Provision of quality and safety of food raw materials and food products in the Vologda region in the years 2012-2020" "Support for novice farmers Vologda region for 2013-2015."

It should be noted that while in the draft regional program dominates the industry perspective and rightly put in the concept of rural development tasks in the Vologda region of diversification of employment in rural areas, the development of rural communities, local government, maintenance of ecological balance in the rural areas are not adequately reinforce in the form of target-oriented.

### 5.2.4 Leningrad Region

In the Leningrad region in 1999-2003. the pilot project "Provision of employment and income of the rural population." The project was implemented with the support of the Government of

the Leningrad Region and the Department for International Development of the UK specialist consulting organization RosAgroFond created at that time based on VIAPI im.A.A.Nikonova. Similar work was carried out in the Oryol region through consulting organization "Agromir."

The project was developed and tested system of mechanisms for sustainable development of rural areas, some of the elements which, for example, the provision of subsidized loans to owners of private farms, are widespread. Created within microfinance institutions: Lodeinopolsky Fund for Rural Development, the credit cooperatives in the Orel region, in Volkhov district of Leningrad region are working successfully to this day. System of mechanisms for rural development, developed as part of the project, is still current. Enumerate its elements:

Financial recovery of agricultural organizations, improving their efficiency as the most important employers in the rural areas through diversification, improving governance, systems of compensation and benefits, optimize resource potential of the company, streamline relationships with smallholders, investments, etc.

Support for farmers (individual farms) by extending the land, transfer of resources work efficiently farms, expansion of microcredit, the interaction with an individual farm, co-operation, to attract investors, training, etc.

The development of private farms of the population by increasing their marketability by strengthening their legal status, media support and the supply of new fields of activity, training, technological consulting, issuing microloans, cooperation, organization of competitions for the best farmstead etc.

Diversification of the rural non-farm employment and support business in rural areas in all areas relevant to the pilot areas (crafts, crafts, local industry, forestry and wood processing, collection and processing of wild plants, rural tourism, personal services, etc.) with the help of counseling, micro-credit cooperatives, increased vertical and horizontal integration links.

The development of rural social infrastructure by mobilizing domestic resources of rural communities, modeling the interaction of the local administration, rural entrepreneurs and the public. In this task to conduct an inventory of social infrastructure are identified and ranked the population's social services, develop proposals to provide social services and create organizations to supply them (municipal utilities, consumer cooperatives, informal groups of citizens), organized public works.

Experience of the project is described in a two-volume textbook "mechanism for sustainable rural development", published by the Ministry of Agriculture.

### **5.2.5 Sverdlovsk region**

Sverdlovsk Region is an industrial region, but its rural areas have considerable potential, the disclosure of which prevent the following problems:

- disclosure of price discrepancy between production agriculture and material resources used in agriculture;
- lack of investment and innovation in the agricultural sector, high wear and tear of fixed assets;

- low level of effective demand for food;
- unsatisfactory level of market infrastructure, hampering access for producers of agricultural products to the markets of food, material, technical and information resources;
- lack of qualified personnel due to low standards of living and social unattractiveness of rural communities.

To overcome these problems is aimed approved October 27, 2011 regional target program "Development of agriculture and rural areas of the Sverdlovsk region (" Ural village ") in 2012 - 2015."

Objectives of the "Ural village" defined as follows:

1. improvement of the demographic situation in the rural areas;
2. sustainable development of rural areas through the creation of decent living conditions and activities of the population;
3. ensuring sustainability of the agricultural sector.

To achieve these objectives is expected to resolve two dozen tasks that are distributed on the two sub-programs: "Sustainable development of rural areas of the Sverdlovsk region" and "Development of Agriculture of the Sverdlovsk region." In the first sub should be solved following problems:

1. raising the prestige of living;
2. improving the living conditions of the citizens;
3. the development of engineering and public infrastructure;
4. the development of transport infrastructure;
5. development of industrial production;
6. the development of small and medium enterprises;
7. development of trade and consumer services;
8. development of consumer cooperatives;
9. development of public health;
10. the development of education;
11. the development of culture and tourism;
12. the development of physical culture and sports;
13. provision of social welfare;
14. increase in employment;
15. environmental protection;

16. creation of software and technology infrastructure for the provision of public services in electronic form;
17. provision of epizootic environment.

Part of these problems is solved in the framework programs of the Ministry of Agriculture and Food of the area, and some - from other departments, some together. For example, the improvement of living conditions of the villagers and is within the federal target program "Social development of the village" (Ministry of Agriculture), through the Ministry of Energy and Housing and the Ministry of Construction and Architecture.

The main role of the customer-coordinator of the program implemented by the Ministry of Agriculture and Food of the region, 12 ministries are complicit as customers, this range will be expanded with the expansion of the activities of the program after 2013 participant of the program is also the Regional Union of Consumer Societies.

Achieving sustainability of the agricultural sector includes the following tasks:

1. general conditions in the functioning of agriculture;
2. the development of priority activities of agriculture;
3. the creation of financial and economic sustainability of the organizations of agriculture and small-scale farming in the countryside.

Thus, the program "Ural village" is an inter-agency framework nature, combines the activities undertaken for the development of rural areas of the program of regional ministries and agencies.

#### **5.2.6 Tambov region**

Classic agrarian region Tambov region is widely used international relations to solve problems of rural development. Tambov region, with the support of the Ministry of Food, Agriculture and Fisheries of France in 2008, has developed a program of cooperation in the field of sustainable development of rural areas, which includes five areas:

1. Promote and support local initiatives as a basis for development plans.
2. Development of a regional policy for sustainable rural development. Medium and long term planning. Replication.
3. Structuring of the stages of development of rural tourism.
4. Generation of management in the field of rural development.
5. Management of the program of rural development.

As part of these areas has been carried out a number of activities:

French experts working visits, during which there was acquainted with the socio-economic situation in the field, to determine their potential, which can be based on the subsequent develop-

ment of these municipalities, identifying "growth points" on which to direct the efforts of local governments and public authorities to bringing them to the path of sustainable development. Results of this work formed the basis of the typology developed in conjunction with the Center for Sustainable Development of Rural Areas RGAU-MSHA named KA Timiryazev sustainable development program of the Tambov region and its three pilot districts. Implemented in parallel working visits of the Tambov region in various French regions to review the best practices for sustainable rural development

As part of the cooperation with German partners, with the active participation of the Ministry of Agriculture of Russia has launched the project EU retraining in rural development [www.tempus-rudeco.ru](http://www.tempus-rudeco.ru) .

In October 2011, in Tambov, with the participation of the French side was successfully revived Pokrovsky Fair (following the example of the Strasbourg Christmas market), which will now become a traditional.

Cooperation has been a regional park and Brenn University GRDerzhavin setting up a similar park on the River Crow.

A partnership between the Association of Farmers' Paris Farm "and Tambov society beekeepers.

The stipulated administrative cooperation of French agricultural and Tambov administration in the three-year period, is transformed into a decentralized cooperation of specific business entities at the regional level.

The implementation of the Tambov-French project facilitated the integration of the regional program of activities aimed at the sustainable development of rural areas.

By the Administration of the Tambov region on December 23, 2010 N 1521 "On approval of the long-term target program" Development of tourism in the Tambov region in 2011 - 2015 "in accordance with the Memorandum of cooperation between France and the Tambov region in the field of sustainable development of rural areas in the region will be the development of rural tourism (rural tourism .) These prospects will open "leverage effect" in other sectors of the regional tourism development.

In the works "program for agricultural development and regulation of agricultural products, raw materials and food Tambov region for 2009 - 2012 years" containing section III. «Sustainable development of rural areas." Section includes the traditional areas of sustainable development of rural areas, to improve the quality rural livelihoods:

- measures to increase the level of social infrastructure and engineering arrangement of rural settlements;
- event support integrated compact construction and improvement of rural communities in the pilot projects.

In addition, the integrated development of rural areas of the Tambov region and focused implementation of such programs as "The development of the pilot family dairy cattle farms on the

basis of (peasant) farms Tambov region in 2009 - 2011." Under this program is planned to create 26 family dairy cattle farms on the basis of (peasant) farms employing at least 130 people.

On the program "Support for novice farmers in the Tambov region" for 2012 - 2014 years "124 farmers will be able to start with the implementation of projects of state support the creation and development of their country (farmer) farms.

### **5.2.7 Ulyanovsk region**

In rural development are important advisors to assist in the dissemination of useful information, development projects, preparation of grant applications, providing feedback. Ulyanovsk region are trying to use the village chiefs as development consultants. Note that the village elders in many parts of the country are the effective assistant local government. Position of head of the village - is public. In the Ulyanovsk region decided that old age will interact with local authorities in the settlements and solve a number of important tasks: prepare a report for the Governor of the situation in the territories, and to take people on the basis of interviews with them to develop proposals to higher authorities, to explain the content of the laws and the people to carry out other assignments, which will determine the governor. During that wardens will be entitled to free travel on public transport and municipal subsidy for utilities in the amount of 325 rubles. (Law of the Ulyanovsk region "on the head of the village" from 10.06.2011 DA 168).

Coordinates the activities of the village chiefs Agency for Rural Development, which contains three units: Directorate for Development of Horticulture, Directorate for development of rural areas, and information and consultation center.

How effectively the village elders will be able to deal with such vast and not an easy task, not yet clear. In any case, the consultant for rural development should at least be trained, ensuring that they receive the skills needed to solve the tasks attributed to them, such as a regional course on the development of the sustainable development of rural areas on the basis of ten training modules developed by the Ministry of Agriculture of the Russian Federation within the framework of the EU TEMPUS ([www.tempus-rudeco.ru](http://www.tempus-rudeco.ru)). In general, the idea of creating a network of consultants in the field is correct and should be spread.

## Conclusion

Developing a system of measures for sustainable development of rural areas and the relevant regional programs will help to solve such issues as:

creation of the economic mechanism of self-development of rural areas;

optimization tasks and management functions within the law in order to strengthen local government structures and the creation of better conditions for their development;

The development of housing, social and municipal services in rural areas as an important area of local government;

increasing the attractiveness of life in rural areas through the creation of new jobs, legal protection of agricultural products, increase revenue, improve infrastructure, creation and optimization of markets, productivity and sustainability of agricultural production,

creating a network of centers of information, advice and training support, communication and development - development centers at regional and, if necessary at the district level (Rural Advisory Centres)

support the development of civil society in rural areas.

At the same time, a program can not solve at once all problems that were accumulated for decades - this is a long process that requires a systematic approach, the involvement of all interested parties, a lot of patience and creativity. Federal funding would have to be supplemented by regional, municipal and non-budgetary sources, and the use of all the many, but still under-utilized potential of rural areas.

Experience in the development of the first regional program URST showed that special attention should be paid to:

the creation of competent working groups with different levels of administration, attracted experts and institutions, local universities, research institutes and the public;

the use of all potentials of rural areas, they are identical. Do not rely solely on the federal program of SRD

the creation of an interdepartmental commission for the development of rural areas under the supervision of the Head (Deputy) of the subject of the Russian Federation;

The first year of the program it is advisable to devote its debugging tools and only then increase funding;

Special attention should be given to the grant support the initiatives of the population;

Before each stage of software development is necessary to carry out the appropriate training. It is recommended to use the courses presented at [www.tempus-rudeco.ru](http://www.tempus-rudeco.ru).

# Annex I

## Appendix 1: Passport of regional target program

Sustainable rural development \_\_\_\_\_ area (region, country)  
for the years 2014-2020

Program name		Regional target program "Sustainable rural development _____ area (region, country)" for 2014-2020
Requisites of legal act for a program		The concept of sustainable development in rural areas of the Russian Federation for the period up to 2020, approved by the Federal Government from 30.11.2010 № 2136-r
State Customer of Program		
Target of program		
Tasks of program		
The most important target and program indicators		
Terms of program realisation		2014 – 2020 years
The main stages of the program		
Performers of main activities		
Amounts and sources of program funding by year		total funding from all sources - thous., including by year:
Expected results of the program and the results of social and economic benefits		

## Appendix 2: Survey (list of issues)

Illustrative list of questions to send to the heads of executive heads of village councils, leaders of unions and associations, business leaders, active population

1. How do you assess the socio-economic development of the area.

District develops interesting projects implemented

Something is done, but significant progress is not visible

no development

\_\_\_\_\_ Other (please specify)

2. What projects are in the district?

Production \_\_\_\_\_ (specify)

Social \_\_\_\_\_ (specify)

Do not know

3. In your opinion, should develop in the district administration of the district, the edges (no more than 3 responses).

Animal husbandry

Processing of agricultural products

Tourism

Cooperation

Production of building materials

Trade

Personal services (hairdressing, tailoring, repair of household appliances)

Other \_\_\_\_\_ (specify)

4. What social sites would you recommend to build (rebuild) in your village (no more than 2 objects)?

- School

- Hospital

- Kindergarten

- Sports complex

- Stadium

- Pool

- A multi-entertainment center

- \_\_\_\_\_ Other (please specify)

5. What is your district (the village) can be proud of?

History \_\_\_\_\_ (specify)

People \_\_\_\_\_ (specify)

Production \_\_\_\_\_ (specify)

The natural wealth of \_\_\_\_\_ (please specify)

6. Which products are best known for your area?

\_\_\_\_\_ (Specify)

7. What in your opinion should be given priority in the development of the program (no more than 4 responses to Rank the order of importance):

- The fight against alcoholism and drug abuse;

- The fight against crime;

- The creation of new jobs;

- Higher wages;

- Construction of new housing;

- Repair and construction of public facilities;

- Repair of water and heating systems;
- Repair of roads;
- The fight against dumping;
- Improvement;
- Support for local initiatives.

8. What, in your opinion, is able to return to the village youth (up to 2 answers):

- Interesting work;
- Increase wages;
- The possibility of self-realization;
- Free housing;
- Improvement of public health;
- The placement of children in kindergarten;
- Nothing.

9. Which activities of the village administration in person you are ready to take part:

- Spring work day;
- Cleaning of cemeteries;
- Joint work on the improvement of the village (road fill with gravel, broken flower beds, tree planting, etc.);
- Assistance in the organization of the "Day of the village" (baking, decoration, fair masters)
- Participation in the concert;
- I think that the case of the village administration.

10. Are you ready to share with your neighbours to make money at the problems the streets of the village?

- Yes
- Insufficient funds
- No, it's taking care of village (district) administration

## Appendix 3: methodological program

Expert survey of managers at the district level to draft a program for the sustainable development of rural areas

The analysis is done at district level and then aggregated at the regional level

Objective: to get expert advice on the status of rural areas at the beginning of the development of the sustainable development of rural areas and the views of experts on the challenges and possible directions of development, ways to improve rural incomes.

The tasks of the expert survey is to get the following information:

- 1) data on the demographic situation in the area, the profile of employment and income levels of the population;
- 2) information on the level of employment in the area of unemployment, hidden unemployment, the impact of migration on the labor market;
- 3) on the activities of the district administration to provide employment and income of the population, about existing obstacles and ways to overcome them;
- 4) the relative advantages of rural areas and the possible directions of development.
- 5) the development of small business
- 6) about the prospects of the development of agriculture, especially livestock (unused land, the availability of investment plans of enterprises)
- 7) The experts involved:
  - Heads and the district administration for agriculture, labor and employment, social security, the economy, construction, municipal property, housing and communal services.
  - specialists regional employment service
  - Heads and administration of rural settlements,
  - heads of agricultural enterprises and other organizations located in rural areas.
  - Community Council for Enterprise Development at the head of the district.

Test method: semi-structured interviews.

### Expected Results

The demographic situation in the region

Profile of rural employment, employment and income, unemployment

The state of agriculture, non-agricultural sectors of prevailing employment

State of social and physical infrastructure

The environmental situation in the region

SWOT-analysis of rural areas

PESTLE - analysis of rural areas

State of civil society, the degree of institutionalization of rural society

## **Appendix 4: Structure**

### **Regional program for the sustainable development of rural areas**

Regional program for sustainable development of rural areas (hereinafter - the Program) includes the following sections.

#### **1. Characteristics of the problem, to be solved by the program.**

This section includes a statement of the problem, the analysis of its causes, the reasons for it due to the priority national project "Development of agriculture" and the State program for the development of agriculture and regulation of agricultural products, raw materials and food for the years 2013-2020. This new section should also contain a justification for the need to address program-target method at the regional level and the analysis of different variants of the decision, and a description of the principal risks of the program.

#### **2. The main aims and objectives, the timing and implementation stages, the targets of the Programme.**

This section presents the aims and objectives of the program, the timing and the stages of its implementation, as well as the rationale for the target values of the Programme over the years of the program.

#### **3. Programme activities.**

This section includes a description of the Program, including:

- a. activities aimed at making capital investments, indicating the annual amount of the costs of implementation of each activity by source of funding, as well as information about the power and timing of the implementation of investment projects in respect of capital construction;
- b. other activities of the Programme for the expenses of the regional budget, including the co-financing from the federal budget or local budgets, extrabudgetary sources;
- c. actions of regulatory enforcement of the Program;
- d. of organizational and information management program.

#### **4. Justification of resource support program.**

This section includes a general study on the funds required for the implementation of the Programme, including the budget of the regional budget, broken down by year of implementation, the field of "capital investment", "research and development work" and "other needs."

Direction "capital investment" includes expenditure commitments of the Russian Federation to be included in the appropriate budget in forms of budget investment in capital construction of the property, and subsidies for the implementation of the construction, reconstruction, modernization of capital construction projects owned by legal persons not are government (municipal) institutions and government (municipal) enterprises as well as public investment in fixed assets (equipment not included in the estimate of construction) and liabilities of legal entities.

Section also includes justification of the possibility of co-financing programs from the federal budget, and (or) local budgets, fund-raising extrabudgetary sources and description of how to attract these funds.

## **5. Manage the implementation of the Programme.**

This section includes:

- a. the allocation of responsibilities and the mechanism of interaction between the participants of the Program. Current management of the regional programs are government customer programs, and (or) management;
- b. procedure for the organizational and financial plan of the Programme;
- c. a mechanism for monitoring and evaluation of programs, procedures ensure transparency (openness) of the results of monitoring and evaluation of the implementation of the Programme;
- d. mechanisms to adjust programs, including the activities of the Programme and resource support;
- e. procedures for publicity (openness) conditions of participation in the activities of implementing the Programme, as well as information on the contests and the criteria for determining the winners.

## **6. Assessment of the socio-economic benefits of the program.**

This section describes the social, economic and environmental consequences of the results that may arise in the implementation of the Programm, the overall assessment of the contribution of the Programm to the economic development of the Russian Federation and municipalities, as well as evaluating the effectiveness of budget spending for the program. Evaluating the effectiveness of implemented by year for the life of the program and, if necessary, and after its implementation.

As part of the Programme approved applications that include:

tabular or graphic material to specific sections of the Program;

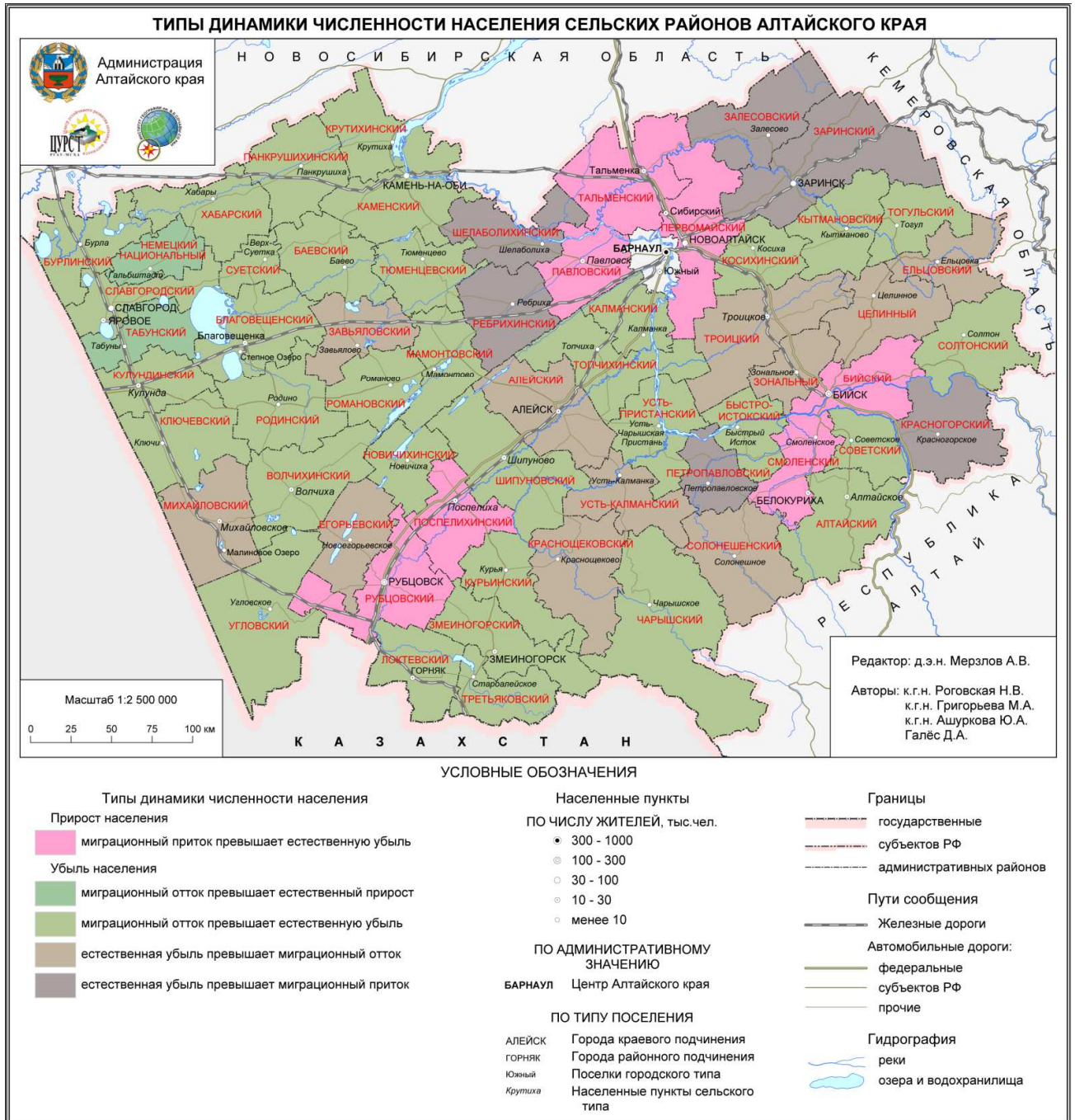
list of target programs, indicating method of calculating the values of these parameters (see Annex 3 to present recommendations);

methodology to assess the effectiveness of the program;

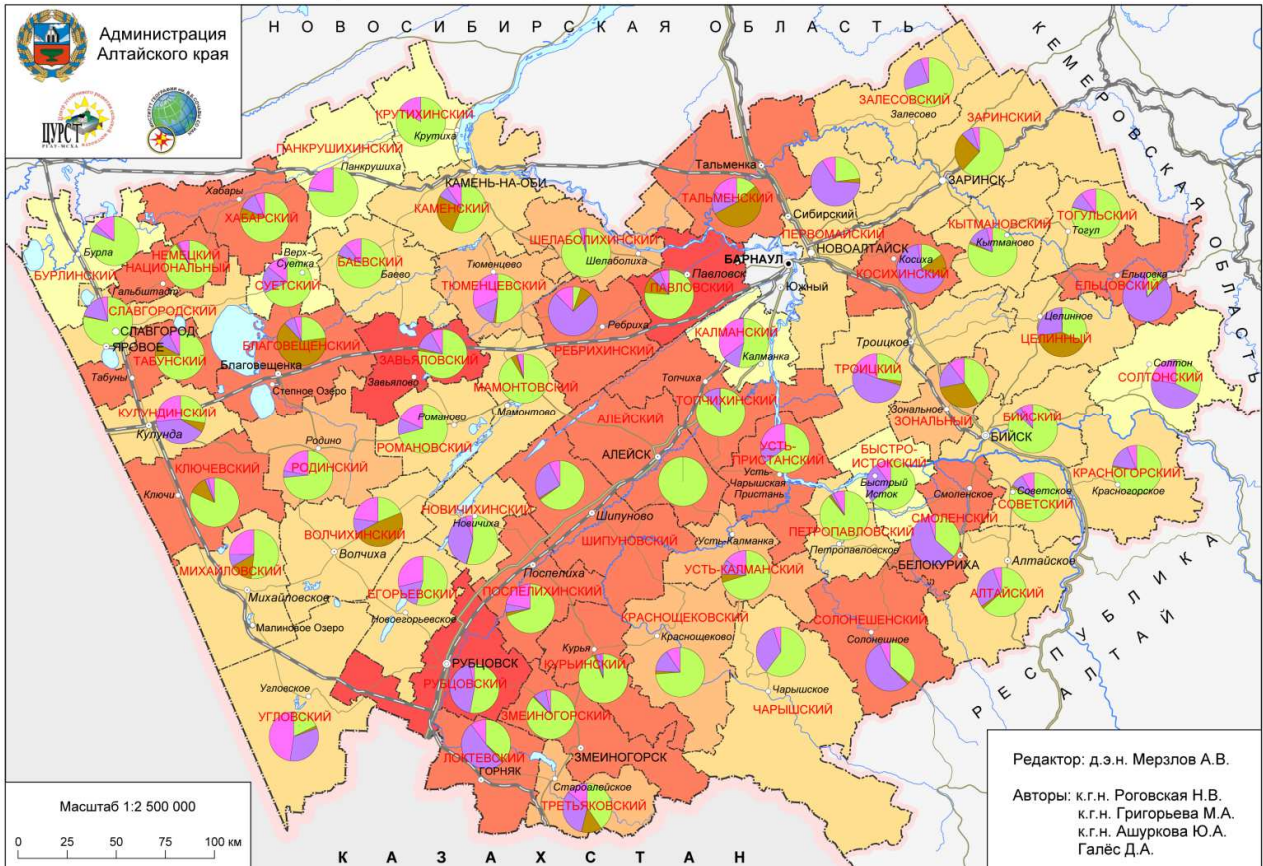
list of municipal programs implemented at the expense of local budgets (in the presence of the Regional Programme of grounds for granting subsidies to local budgets).

In order to justify the resource support programs in the ground materials to the program also provides additional documentation and calculations to assess the need for and adequacy of resource support for the implementation of the Programme, the targets, as well as documents confirming the availability of public corporations to participate in the implementation of investment projects of the Program on the terms of transfer of the ownership of the Russian Federation of the shares of such organizations in the event of provision of public investment in their capital for the implementation of investment projects on construction of their capital construction projects.

# Appendix 5: Maps



# ИНВЕСТИЦИОННАЯ АКТИВНОСТЬ В СЕЛЬСКИХ РАЙОНАХ АЛТАЙСКОГО КРАЯ

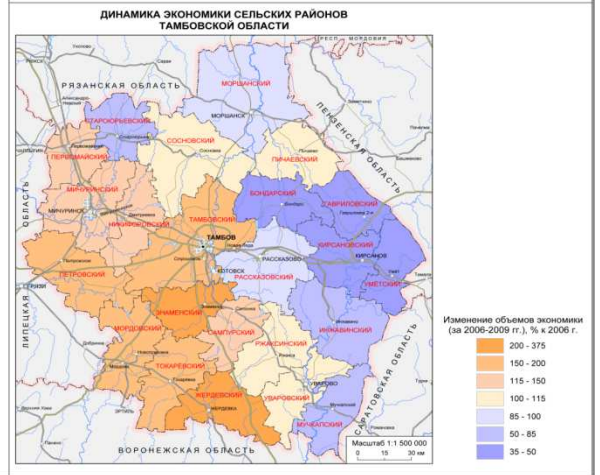
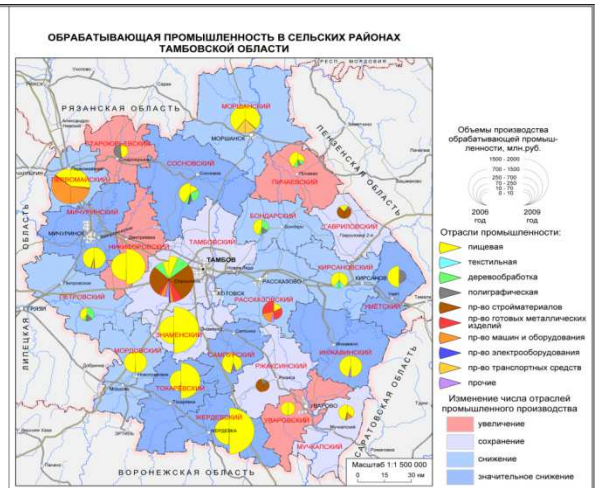
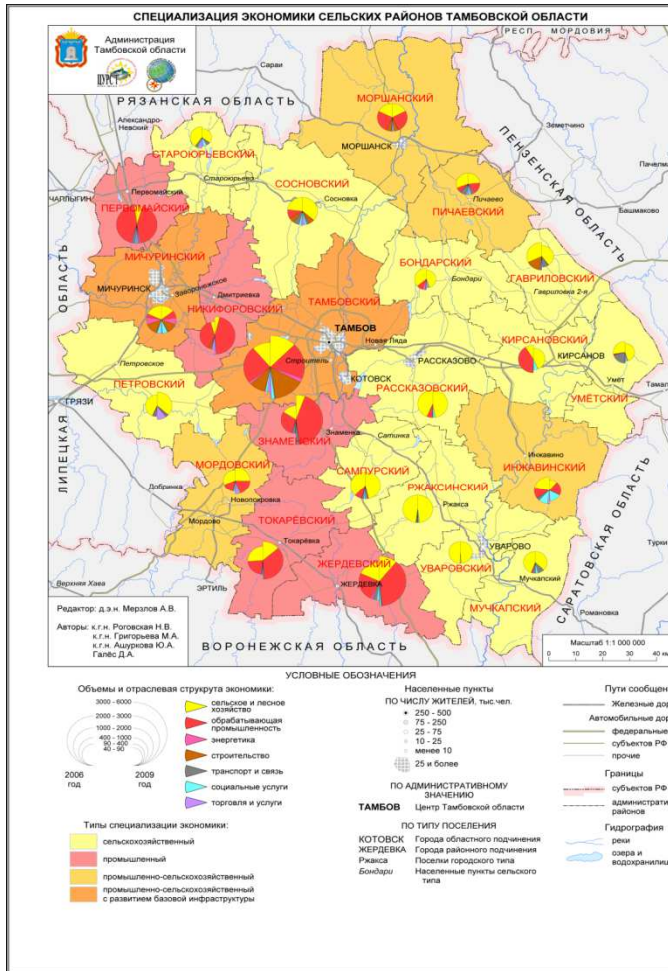


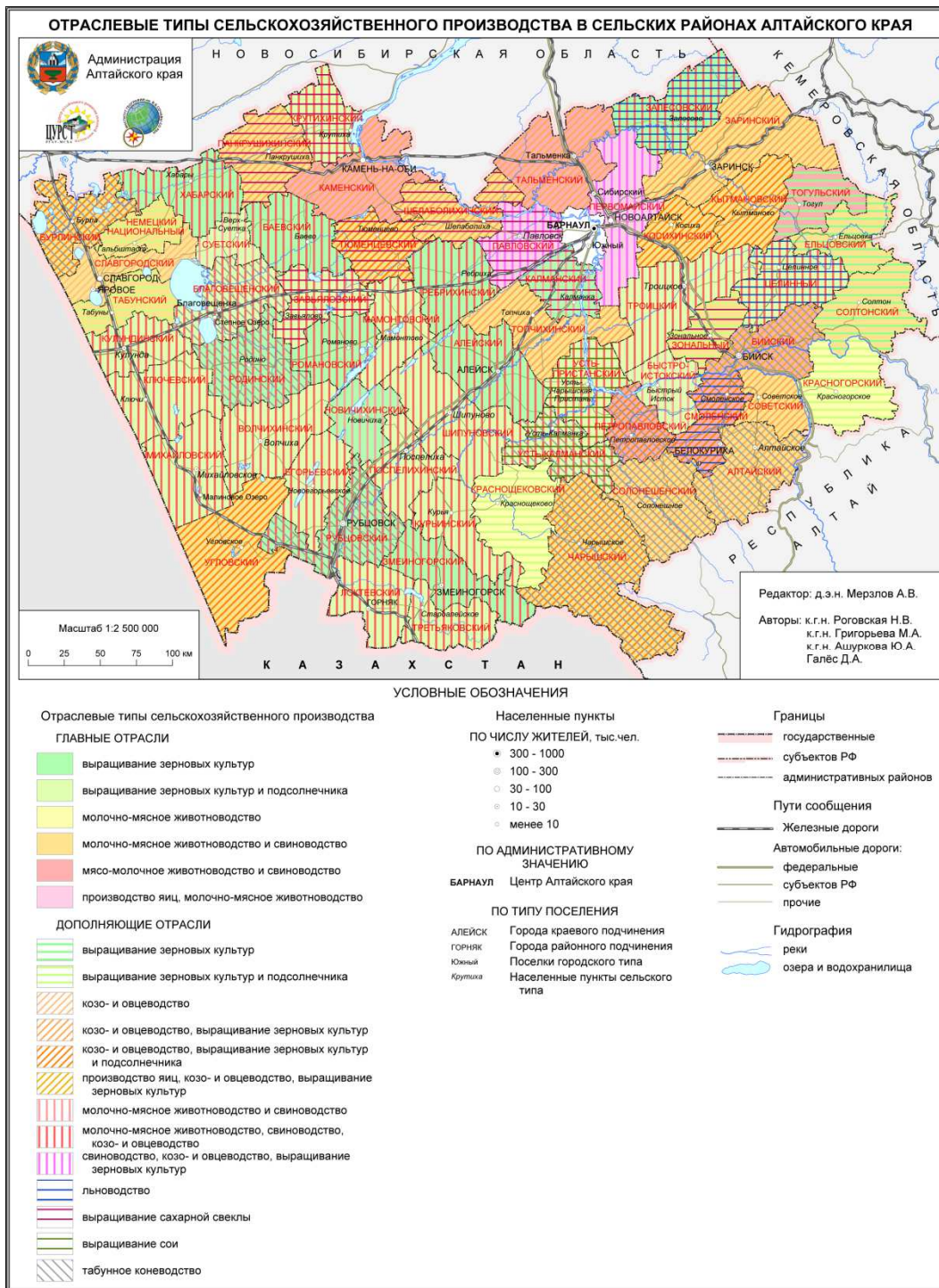
Редактор: д.э.н. Мерзлов А.В.  
 Авторы: к.г.н. Роговская Н.В.  
 к.г.н. Григорьева М.А.  
 к.г.н. Ашуркова Ю.А.  
 Галёс Д.А.



## УСЛОВНЫЕ ОБОЗНАЧЕНИЯ

<p><b>Инвестиционная активность</b></p> <ul style="list-style-type: none"> <li><span style="display: inline-block; width: 15px; height: 15px; background-color: red; margin-right: 5px;"></span> стабильно высокая</li> <li><span style="display: inline-block; width: 15px; height: 15px; background-color: orange; margin-right: 5px;"></span> рост активности</li> <li><span style="display: inline-block; width: 15px; height: 15px; background-color: yellow; margin-right: 5px;"></span> средний уровень</li> <li><span style="display: inline-block; width: 15px; height: 15px; background-color: lightyellow; margin-right: 5px;"></span> снижение активности</li> <li><span style="display: inline-block; width: 15px; height: 15px; background-color: paleyellow; margin-right: 5px;"></span> стабильно низкая</li> </ul>	<p><b>Структура инвестиций</b></p> <p>Инвестиции в:</p> <ul style="list-style-type: none"> <li><span style="display: inline-block; width: 15px; height: 15px; background-color: green; margin-right: 5px;"></span> сельское хозяйство</li> <li><span style="display: inline-block; width: 15px; height: 15px; background-color: blue; margin-right: 5px;"></span> промышленность</li> <li><span style="display: inline-block; width: 15px; height: 15px; background-color: purple; margin-right: 5px;"></span> инфраструктуру</li> <li><span style="display: inline-block; width: 15px; height: 15px; background-color: pink; margin-right: 5px;"></span> сферу обслуживания населения</li> </ul>	<p><b>Населенные пункты</b></p> <p><b>ПО ЧИСЛУ ЖИТЕЛЕЙ, тыс.чел.</b></p> <ul style="list-style-type: none"> <li><span style="display: inline-block; width: 10px; height: 10px; border: 1px solid black; border-radius: 50%; margin-right: 5px;"></span> 300 - 1000</li> <li><span style="display: inline-block; width: 10px; height: 10px; border: 1px solid black; border-radius: 50%; margin-right: 5px;"></span> 100 - 300</li> <li><span style="display: inline-block; width: 10px; height: 10px; border: 1px solid black; border-radius: 50%; margin-right: 5px;"></span> 30 - 100</li> <li><span style="display: inline-block; width: 10px; height: 10px; border: 1px solid black; border-radius: 50%; margin-right: 5px;"></span> 10 - 30</li> <li><span style="display: inline-block; width: 10px; height: 10px; border: 1px solid black; border-radius: 50%; margin-right: 5px;"></span> менее 10</li> </ul> <p><b>ПО АДМИНИСТРАТИВНОМУ ЗНАЧЕНИЮ</b></p> <p>БАРНАУЛ    Центр Алтайского края</p> <p><b>ПО ТИПУ ПОСЕЛЕНИЯ</b></p> <p>АЛЕЙСК    Города краевого подчинения</p> <p>ГОРНЯК    Города районного подчинения</p> <p>Южный    Поселки городского типа</p> <p>Крутиха    Населенные пункты сельского типа</p>	<p><b>Границы</b></p> <ul style="list-style-type: none"> <li><span style="display: inline-block; width: 20px; border-bottom: 1px solid black; margin-right: 5px;"></span> государственные</li> <li><span style="display: inline-block; width: 20px; border-bottom: 1px dashed black; margin-right: 5px;"></span> субъектов РФ</li> <li><span style="display: inline-block; width: 20px; border-bottom: 1px dotted black; margin-right: 5px;"></span> административных районов</li> </ul> <p><b>Пути сообщения</b></p> <ul style="list-style-type: none"> <li><span style="display: inline-block; width: 20px; border-bottom: 2px solid black; margin-right: 5px;"></span> Железные дороги</li> <li><b>Автомобильные дороги:</b></li> <li><span style="display: inline-block; width: 20px; border-bottom: 1px solid black; margin-right: 5px;"></span> федеральные</li> <li><span style="display: inline-block; width: 20px; border-bottom: 1px dashed black; margin-right: 5px;"></span> субъектов РФ</li> <li><span style="display: inline-block; width: 20px; border-bottom: 1px dotted black; margin-right: 5px;"></span> прочие</li> </ul> <p><b>Гидрография</b></p> <ul style="list-style-type: none"> <li><span style="display: inline-block; width: 20px; border-bottom: 1px solid blue; margin-right: 5px;"></span> реки</li> <li><span style="display: inline-block; width: 20px; border-bottom: 1px solid blue; margin-right: 5px;"></span> озера и водохранилища</li> </ul>
---	---	---	--







## Annex II: Training material

The elaborated RUDECO modules serve for the purpose of “Vocational Training in Rural Development and Ecology” in Russia. They target on representatives of local and regional administrations and advanced students in the different fields of rural development. All below listed RUDECO partners can be addressed in case of training interest in one of the modules.

For readers of the module textbooks and training participants the project website provides the possibility to download additional material on <http://tempus-rudeco.ru/en/modules> (required password **RD-modules**), e.g. presentations and other didactic material used in the conducted trainings.

# RUDECO partners and contact information

## Contact persons for the presented module

Russian State Agrarian University-Moscow Timiryazev Agricultural Academy  
Sustainable Rural Development Center.  
Dr. Alexander V. Merzlov,

Email [a.merzlov@gmail.com](mailto:a.merzlov@gmail.com)

## All RUDECO partners

### Russia/Россия

Russian State Agrarian University-Moscow Timiryazev  
Agricultural Academy  
Sustainable Rural Development Center  
Moskva, Timiryazevskaya 49  
Moscow 127550  
[a.merzlov@gmail.com](mailto:a.merzlov@gmail.com)  
<http://www.timacad.ru/en/>

Российский государственный аграрный университет –  
МСХА имени К.А.Тимирязева  
Центр устойчивого развития сельских территорий  
Тимирязевская, 49  
г. Москва, 127550  
[a.merzlov@gmail.com](mailto:a.merzlov@gmail.com)  
<http://www.timacad.ru/>

Russian Ministry of Agriculture  
Department of Rural Development and Social Policy  
1/11 Orlikov pereulok  
Moscow 107139  
<http://www.mcx.ru/>

Министерство сельского хозяйства РФ  
Департамент сельского развития и социальной полити-  
ки  
Орликов переулок, 1/11  
г. Москва, 107139  
<http://www.mcx.ru/>

All-Russian Alexander Nikonov Institute of Agrarian Prob-  
lems and Informatics of the Russian Academy of Agricul-  
tural Sciences (VIAPI)  
B. Kharitonievskiy per. 21/6  
Moscow 105064  
[lovchintseva@viapi.ru](mailto:lovchintseva@viapi.ru)  
<http://www.viapi.ru/>

Всероссийский институт аграрных проблем и информа-  
тики им. А.А. Никонова Российской академии сельско-  
хозяйственных наук  
Б. Харитоньевский пер. 21/6,  
г. Москва, 105064  
[lovchintseva@viapi.ru](mailto:lovchintseva@viapi.ru)  
<http://www.viapi.ru/>

Tambov State University named after G.R.Derzhavin  
Internatsionalnaya 33  
Tambov 392000  
[enoctsu@yandex.ru](mailto:enoctsu@yandex.ru)  
<http://tsutmb.ru/>

Тамбовский государственный университет имени Г.Р.  
Державина  
Ул. Интернациональная, 33  
г. Тамбов, 392000  
[enoctsu@yandex.ru](mailto:enoctsu@yandex.ru)  
<http://tsutmb.ru/>

Administration of Tambov region  
Internatsionalnaya 14  
Tambov 392000  
<http://www.tambov.gov.ru/>

Администрация Тамбовской области  
Интернациональная, д.14  
г. Тамбов, 392000  
<http://www.tambov.gov.ru/>

Orel State Agrarian University  
Generala Rodina 69  
Orel 302019  
[inter@orelsau.ru](mailto:inter@orelsau.ru)  
<http://www.orelsau.ru/>

Орловский государственный аграрный университет  
ул. Генерала Родина, д. 69.  
г. Орел, 302019  
[inter@orelsau.ru](mailto:inter@orelsau.ru)  
<http://www.orelsau.ru/>

Samara State Agricultural Academy  
settl. Ust-Kineskiy, 2 Uchebnaya str.  
Samara region 446442  
[interoffice@mail.ru](mailto:interoffice@mail.ru)  
<http://www.ssa.ru/>

Самарская государственная сельскохозяйственная  
академия  
п. Усть-Кинельский, ул. Учебная 2  
Самарская обл., 446442  
[interoffice@mail.ru](mailto:interoffice@mail.ru)  
<http://www.ssa.ru/>

Yaroslavl State Agricultural Academy  
Tutaevskoe shosse 58  
Yaroslavl 150042  
S. Shchukin: s.shhukin@yarcx.ru  
<http://www.yaragrovuz.ru/>

Kostroma State Agricultural Academy  
Karavaevo Campus  
Kostromskoy rayon  
Kostromskaya oblast, 156530  
primai@mail.ru  
<http://kgsxa.ru/>

Stavropol State Agrarian University  
Per. Zootekhnicheskiy 12  
Stavropol 355017  
stavropolfad@yandex.ru  
<http://www.stgau.ru/english/official.php>

Omsk State Agrarian University named after P.A.Stolypin  
Institutskaya Ploshchad 2  
Omsk 644008  
ng-kazydub@yandex.ru  
<http://www.omgau.ru/>

Novosibirsk State agrarian University  
Dobrolubova 160  
Novosibirsk, 630039  
dr.schindelov@ngs.ru  
<http://nsau.edu.ru/>

Buryat State Academy of Agriculture named after  
V.R.Philippov  
Pushkina 8  
Ulan-Ude, 670024  
econresearch@rambler.ru  
<http://www.bgsha.ru/>

Association of organic and biodynamic agriculture  
"AGROSOPHIE"  
Krasnaya 20  
Solnechnogorsk  
Moskovskaya Oblast, 141506  
info@biodynamic.ru  
<http://www.biodynamic.ru/en/>

LLC Company "Gutelot"  
Marshala Katukova Str. 20  
Moscow 123592

Ярославская государственная сельскохозяйственная  
академия  
Тутаевское шоссе, 58  
г. Ярославль, 150042  
С.В. Щукин: s.shhukin @ yarcx.ru  
<http://www.yaragrovuz.ru/>

Костромская государственная сельскохозяйственная  
академия  
Учебный городок КГСХА  
пос. Каравеево, Костромской район  
Костромская обл., 156530  
primai@mail.ru  
<http://kgsxa.ru/>

Ставропольский государственный аграрный универси-  
тет  
пер. Зоотехнический 12  
г. Ставрополь, 355017  
stavropolfad@yandex.ru  
<http://www.stgau.ru/>

Омский государственный аграрный университет  
им.П.А.Столыпина  
Институтская площадь, 2  
г. Омск, 644008  
ng-kazydub@yandex.ru  
<http://www.omgau.ru/>

Новосибирский государственный аграрный университет  
ул. Добролюбова, 160  
г. Новосибирск, 630039  
dr.schindelov@ngs.ru  
<http://nsau.edu.ru/>

Бурятская государственная сельскохозяйственная ака-  
демия им. В.Р. Филиппова  
ул. Пушкина, 8  
г. Улан-Удэ, 670024  
econresearch@rambler.ru  
<http://www.bgsha.ru/>

Некоммерческое Партнёрство по развитию экологиче-  
ского и биодинамического сельского хозяйства «Агро-  
софия»  
ул. Красная, 20  
г. Солнечногорск,  
Московская область, 141506  
info@biodynamic.ru  
<http://www.biodynamic.ru/ru/>

ООО компания «Гутелот»  
ул. Маршала Катукова, д. 20  
г. Москва, 123592

The National Park "Plescheevo lake"  
Sovetskaya 41  
Pereslavl-Zalesskiy  
Yaroslavl'skaya Oblast, 152020

Service on environmental safety, protection and use of  
fauna, aquatic bioresources  
Sauren Shaumyan Str. 16  
Orel 302028

Moscow State Agroengineering University named after  
V.P. Goryachkin.  
Timiryazevskaya Str. 58  
Moscow, 127550  
international@msau.ru  
<http://www.msau.ru/>

All-Russian Association of Educational Institutions of  
Agro-Industrial Complex and Fisheries  
Listvennichnaya alleya 16A, build. 3  
Moscow, 127550  
direct@agroob.ru  
<http://www.agroob.ru/>

#### **Germany/Германия**

University of Hohenheim  
Institute of Landscape and Plant Ecology (320)  
Eastern Europe Centre (770)  
70599 Stuttgart  
oez@uni-hohenheim.de  
<https://oez.uni-hohenheim.de/>

Agency for Development of Agriculture and Rural Areas  
of the Federal State of Baden-Wuerttemberg (LEL)  
Oberbettringer Strasse 162  
73525 Schwäbisch Gmünd  
roland.grosskopf@lel.bwl.de  
<https://www.landwirtschaft-bw.info>

Academy for Spatial Research and Planning (ARL),  
Section WR IV "Räumliche Planung, raumbezogene  
Politik"  
Hohenzollernstr. 11  
30161 Hannover  
Gustedt@arl-net.de  
<http://www.arl-net.de/>

Terra fusca Ingenieure  
Marohn, Lange Partnerschaftsgesellschaft  
Karl-Pfaff-Str. 24 a  
70597 Stuttgart  
<http://www.terra-fusca.de/>

Национальный парк «Плещеево озеро»  
ул. Советская, 41  
г. Переславль-Залесский,  
Ярославская область, 152020

Управление по охране и использованию объектов жи-  
вотного мира, водных биоресурсов и экологической  
безопасности  
Улица Сурена Шаумяна,16  
г. Орел, 302028

Московский государственный агроинженерный универ-  
ситет им. В.П.Горячкина  
ул. Тимирязевская, 58  
г. Москва, 127550  
international@msau.ru  
<http://www.msau.ru/>

Ассоциация образовательных учреждений агропро-  
мышленного комплекса и рыболовства  
ул. Лиственничная аллея, д. 16 А, корп.3  
г. Москва, 127550  
direct@agroob.ru  
<http://www.agroob.ru/>

Университет Хойенхайм  
Институт ландшафтной экологии  
и экологии растений (320)  
Центр Восточной Европы (770)  
70599 Stuttgart  
oez@uni-hohenheim.de  
<https://oez.uni-hohenheim.de/>

Агентство по развитию сельского хозяйства и сельской  
местности федеральной земли Баден-Вюртемберг  
(LEL)  
Oberbettringer Strasse 162  
73525 Schwäbisch Gmünd  
roland.grosskopf@lel.bwl.de  
<https://www.landwirtschaft-bw.info>

Академия пространственных исследований и планиро-  
вания (ARL)  
Отдел WR IV "Пространственное планирование, терри-  
ториальная политика"  
Hohenzollernstr. 11  
30161 Hannover  
Gustedt@arl-net.de  
<http://www.arl-net.de/>

Терра-фуска  
Marohn, Lange Partnerschaftsgesellschaft  
Karl-Pfaff-Str. 24 a  
70597 Stuttgart  
<http://www.terra-fusca.de/>

## **Poland / Польша**

Warsaw University of Life Sciences  
Laboratory of Evaluation and Assessment of Natural Resources  
Nowoursynowska Street 166  
Warsaw 02-787  
aschwerk@yahoo.de  
<http://www.spoiwzp.sggw.pl>

Варшавский университет естественных наук  
Лаборатория анализа и оценки природных ресурсов  
Nowoursynowska Street 166  
Warsaw 02-787  
aschwerk@yahoo.de  
<http://www.spoiwzp.sggw.pl>

Association for Sustained Development of Poland  
Grzybowa Street 1  
Warsaw-Wesola 05-077  
ekorozwoj@ekorozwoj.pl  
<http://www.ekorozwoj.pl/>

Ассоциация устойчивого развития Польши  
Grzybowa Street 1  
Warsaw-Wesola 05-077  
ekorozwoj@ekorozwoj.pl  
<http://www.ekorozwoj.pl/>

## **France / Франция**

L'Agence de services et de paiement  
Mission des affaires internationales  
Rue du Maupas 2  
Limoges 87040  
Helene.Wehrlin-Crozet@asp-public.fr  
<http://www.asp-public.fr/>

Агентство сервиса и платежей (ASP)  
Служба международных отношений  
Rue du Maupas 2  
Limoges 87040  
Helene.Wehrlin-Crozet@asp-public.fr  
<http://www.asp-public.fr/>

AgroSup Dijon  
26 Boulevard Docteur Petitjean  
21079 Dijon cedex  
c.stewart@agrosupdijon.fr  
<http://www.agrosupdijon.fr/>

Национальный институт высшего образования в сфере агрономии, продуктов питания и окружающей среды (AGROSUP), Дижон  
26 Boulevard Docteur Petitjean  
21079 Dijon cedex  
c.stewart@agrosupdijon.fr  
<http://www.agrosupdijon.fr/>

## **Italy / Италия**

University of Udine  
Department of Agricultural and Environmental Sciences  
Via delle Scienze 208  
33100 Udine  
Francesco.Danuso@uniud.it  
<http://www.uniud.it/>

Университет Удине  
Институт сельскохозяйственных наук и экологии  
Via delle Scienze 208  
33100 Udine  
Francesco.Danuso@uniud.it  
<http://www.uniud.it/>

## **Slovakia / Словакия**

Slovak University of Agriculture  
International Relations Office  
Tr.Andreja Hlinku 2  
94976 Nitra  
Magdalena.Lacko-Bartosova@uniag.sk  
<http://www.uniag.sk/>

Словацкий университет сельского хозяйства  
Отдел международных отношений  
Tr.Andreja Hlinku 2  
94976 Nitra  
Magdalena.Lacko-Bartosova@uniag.sk  
<http://www.uniag.sk/>